

## Product datasheet for **TA312684**

### beta Arrestin 1 (ARRB1) Rabbit Polyclonal Antibody

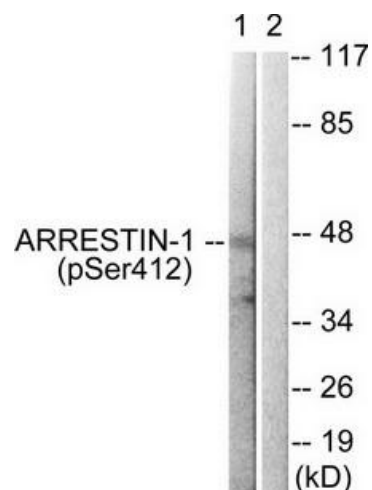
#### Product data:

Product Type:	Primary Antibodies
Applications:	IHC, WB
Recommended Dilution:	WB: 1:500~1:3000, IHC: 1:50~1:100, ELISA: 1:1000
Reactivity:	Human
Modifications:	Phospho-specific
Host:	Rabbit
Isotype:	IgG
Clonality:	Polyclonal
Immunogen:	The antiserum was produced against synthesized phosphopeptide derived from human Arrestin-1 around the phosphorylation site of serine 412 (T-G-SP-P-Q).
Formulation:	Phosphate buffered saline (without Mg <sup>2+</sup> and Ca <sup>2+</sup> ), pH 7.4, 150mM NaCl, 0.02% sodium azide and 50% glycerol.
Concentration:	lot specific
Purification:	The antibody was affinity-purified from rabbit antiserum by affinity-chromatography using epitope-specific immunogen.
Conjugation:	Unconjugated
Storage:	Store at -20°C as received.
Stability:	Stable for 12 months from date of receipt.
Gene Name:	arrestin beta 1
Database Link:	<a href="#">NP_004032</a> <a href="#">Entrez Gene 408 Human P49407</a>
Synonyms:	ARB1; ARR1
Note:	Arrestin 1 (Phospho-Ser412) antibody detects endogenous levels of Arrestin-1 only when phosphorylated at serine 412.
Protein Families:	Druggable Genome
Protein Pathways:	Chemokine signaling pathway, Endocytosis, MAPK signaling pathway

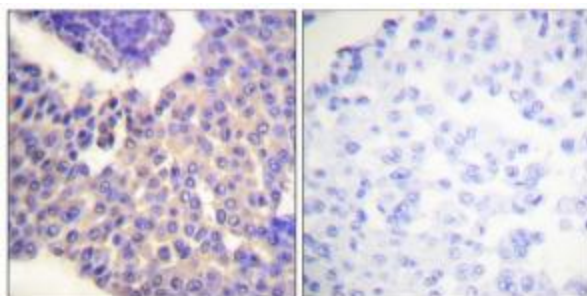


[View online »](#)

## Product images:



Western blot analysis of extracts from COS7 cells, treated with Etoposide (25uM, 60mins), using Arrestin 1 (Phospho-Ser412) antibody. The lane on the right is treated with the synthesized peptide.



Immunohistochemistry analysis of paraffin-embedded human breast carcinoma tissue using Arrestin 1 (Phospho-Ser412) antibody. The picture on the right is treated with the synthesized peptide.