

Product datasheet for **TA312683**

beta Arrestin 1 (ARRB1) Rabbit Polyclonal Antibody

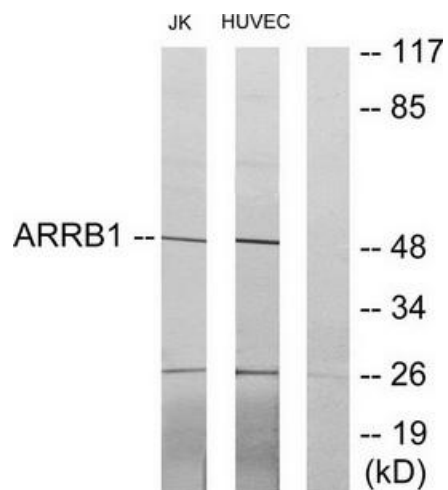
Product data:

Product Type:	Primary Antibodies
Applications:	WB
Recommended Dilution:	WB: 1:500~1:3000, ELISA: 1:10000
Reactivity:	Human, Mouse, Rat
Host:	Rabbit
Isotype:	IgG
Clonality:	Polyclonal
Immunogen:	The antiserum was produced against synthesized peptide derived from C-terminal of human ARRB1.
Formulation:	Phosphate buffered saline (without Mg ²⁺ and Ca ²⁺), pH 7.4, 150mM NaCl, 0.02% sodium azide and 50% glycerol.
Concentration:	lot specific
Purification:	The antibody was affinity-purified from rabbit antiserum by affinity-chromatography using epitope-specific immunogen.
Conjugation:	Unconjugated
Storage:	Store at -20°C as received.
Stability:	Stable for 12 months from date of receipt.
Gene Name:	arrestin beta 1
Database Link:	NP_064647 Entrez Gene 25387 Rat Entrez Gene 109689 Mouse Entrez Gene 408 Human P49407
Synonyms:	ARB1; ARR1
Note:	ARRB1 antibody detects endogenous levels of total ARRB1 protein.
Protein Families:	Druggable Genome
Protein Pathways:	Chemokine signaling pathway, Endocytosis, MAPK signaling pathway



[View online »](#)

Product images:



Western blot analysis of extracts from Jurkat cells and HUVEC cells, using ARRB1 antibody. The lane on the right is treated with the synthesized peptide.