

Product datasheet for **TA312680**

PAK5 Rabbit Polyclonal Antibody

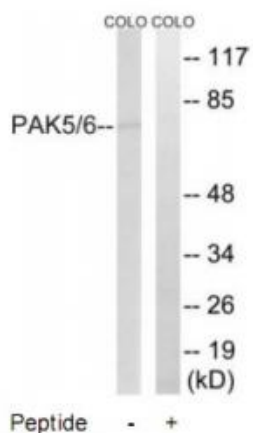
Product data:

Product Type:	Primary Antibodies
Applications:	WB
Recommended Dilution:	WB: 1:500~1:3000, ELISA: 1:40000
Reactivity:	Human, Mouse
Host:	Rabbit
Isotype:	IgG
Clonality:	Polyclonal
Immunogen:	The antiserum was produced against synthesized non-phosphopeptide derived from human PAK5/6 around the phosphorylation site of serine 602/560 (R-K-SP-L-V).
Formulation:	Phosphate buffered saline (without Mg ²⁺ and Ca ²⁺), pH 7.4, 150mM NaCl, 0.02% sodium azide and 50% glycerol.
Concentration:	lot specific
Purification:	The antibody was affinity-purified from rabbit antiserum by affinity-chromatography using epitope-specific immunogen.
Conjugation:	Unconjugated
Storage:	Store at -20°C as received.
Stability:	Stable for 12 months from date of receipt.
Gene Name:	p21 (RAC1) activated kinase 7
Database Link:	NP_065074 Entrez Gene 241656 Mouse Entrez Gene 57144 Human Q9P286
Synonyms:	PAK5
Note:	PAK5/6 (Ab-602/560) antibody detects endogenous levels of total PAK5/6 protein.
Protein Families:	Druggable Genome, Protein Kinase
Protein Pathways:	Axon guidance, ErbB signaling pathway, Focal adhesion, Regulation of actin cytoskeleton, Renal cell carcinoma, T cell receptor signaling pathway

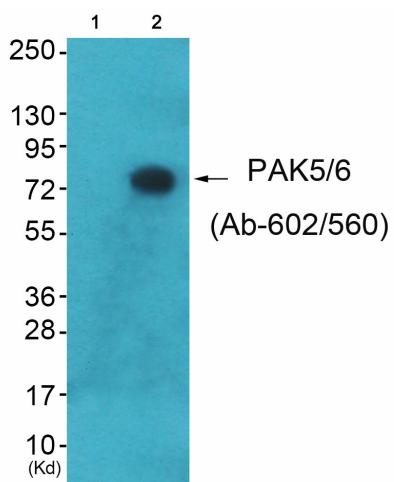


[View online »](#)

Product images:



Western blot analysis of extracts from COLO cells, using PAK5/6 (Ab-602/560) antibody. The lane on the right is treated with the synthesized peptide.



Western blot analysis of extracts from A549 cells (Lane 2), using PAK5/6 (Ab-602/560) Antibody. The lane on the left is treated with synthesized peptide.