

## Product datasheet for **TA312677**

### **IKB alpha (NFKBIA) Rabbit Polyclonal Antibody**

#### **Product data:**

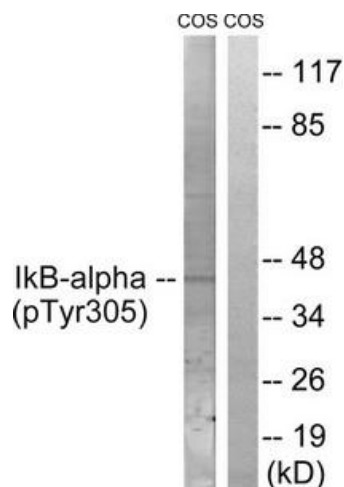
<b>Product Type:</b>	Primary Antibodies
<b>Applications:</b>	IHC, WB
<b>Recommended Dilution:</b>	WB: 1:500~1:3000, IHC: 1:50~1:100, ELISA: 1:1000
<b>Reactivity:</b>	Human, Mouse, Rat
<b>Modifications:</b>	Phospho-specific
<b>Host:</b>	Rabbit
<b>Isotype:</b>	IgG
<b>Clonality:</b>	Polyclonal
<b>Immunogen:</b>	The antiserum was produced against synthesized phosphopeptide derived from human I $\kappa$ B- $\alpha$ around the phosphorylation site of tyrosine 305 (L-P-YP-D-D).
<b>Formulation:</b>	Phosphate buffered saline (without Mg <sup>2+</sup> and Ca <sup>2+</sup> ), pH 7.4, 150mM NaCl, 0.02% sodium azide and 50% glycerol.
<b>Concentration:</b>	lot specific
<b>Purification:</b>	The antibody was affinity-purified from rabbit antiserum by affinity-chromatography using epitope-specific immunogen.
<b>Conjugation:</b>	Unconjugated
<b>Storage:</b>	Store at -20°C as received.
<b>Stability:</b>	Stable for 12 months from date of receipt.
<b>Gene Name:</b>	NFKB inhibitor alpha
<b>Database Link:</b>	<a href="#">NP_065390</a> <a href="#">Entrez Gene 18035 Mouse</a> <a href="#">Entrez Gene 25493 Rat</a> <a href="#">Entrez Gene 4792 Human</a> <a href="#">P25963</a>
<b>Synonyms:</b>	IKBA; MAD-3; NFKBI
<b>Note:</b>	I.B-. (Phospho-Tyr305) antibody detects endogenous levels of I.B-. only when phosphorylated at tyrosine 305.
<b>Protein Families:</b>	Druggable Genome



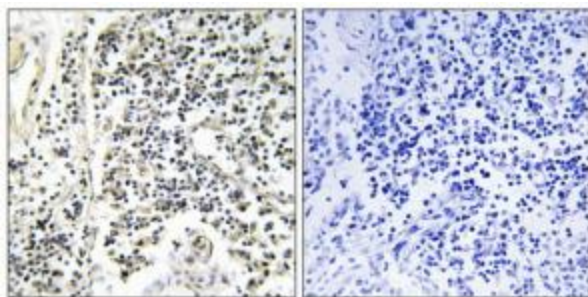
[View online »](#)

**Protein Pathways:**

Adipocytokine signaling pathway, Apoptosis, B cell receptor signaling pathway, Chemokine signaling pathway, Chronic myeloid leukemia, Cytosolic DNA-sensing pathway, Epithelial cell signaling in Helicobacter pylori infection, Neurotrophin signaling pathway, NOD-like receptor signaling pathway, Pathways in cancer, Prostate cancer, RIG-I-like receptor signaling pathway, Small cell lung cancer, T cell receptor signaling pathway, Toll-like receptor signaling pathway

**Product images:**


Western blot analysis of extracts from COS7 cells, treated with nocodazole (1ug/ml, 16hours), using I?B-a (Phospho-Tyr305) antibody. The lane on the right is treated with the synthesized peptide.



Immunohistochemistry analysis of paraffin-embedded human lymph node tissue using I?B-a (Phospho-Tyr305) antibody. The picture on the right is treated with the synthesized peptide.