

Product datasheet for **TA312671**

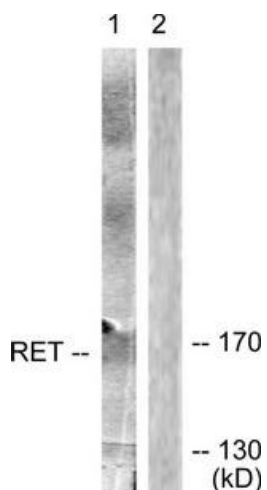
RET Rabbit Polyclonal Antibody

Product data:

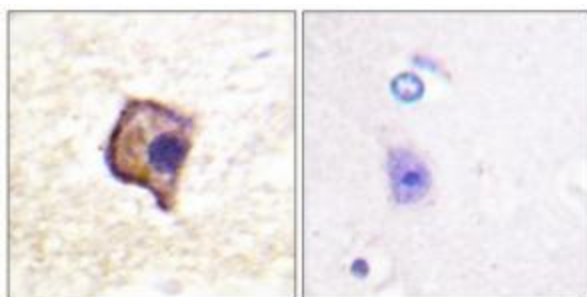
Product Type:	Primary Antibodies
Applications:	IF, IHC, WB
Recommended Dilution:	WB: 1:500~1:3000, IHC: 1:50~1:100, IF: 1:100~1:500, ELISA: 1:1000
Reactivity:	Human, Mouse, Rat
Host:	Rabbit
Isotype:	IgG
Clonality:	Polyclonal
Immunogen:	The antiserum was produced against synthesized non-phosphopeptide derived from human Ret around the phosphorylation site of tyrosine 905 (D-S-YP-V-K).
Formulation:	Phosphate buffered saline (without Mg ²⁺ and Ca ²⁺), pH 7.4, 150mM NaCl, 0.02% sodium azide and 50% glycerol.
Concentration:	lot specific
Purification:	The antibody was affinity-purified from rabbit antiserum by affinity-chromatography using epitope-specific immunogen.
Conjugation:	Unconjugated
Storage:	Store at -20°C as received.
Stability:	Stable for 12 months from date of receipt.
Gene Name:	ret proto-oncogene
Database Link:	NP_065681 Entrez Gene 19713 Mouse Entrez Gene 24716 Rat Entrez Gene 5979 Human P07949
Synonyms:	CDHF12; CDHR16; HSCR1; MEN2A; MEN2B; MTC1; PTC; RET-ELE1; RET51
Note:	Ret (Ab-905) antibody detects endogenous levels of total Ret protein
Protein Families:	Druggable Genome, Protein Kinase, Transmembrane
Protein Pathways:	Endocytosis, Pathways in cancer, Thyroid cancer



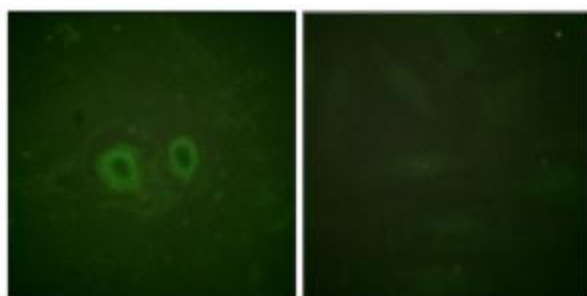
[View online »](#)

Product images:


Western blot analysis of extracts from Jurkat cells, using Ret (Ab-905) antibody. The lane on the right is treated with the synthesized peptide.



Immunohistochemistry analysis of paraffin-embedded human brain tissue using Ret (Ab-905) antibody. The picture on the right is treated with the synthesized peptide.



Immunofluorescence analysis of HuvEc cells, using Ret (Ab-905) antibody. The picture on the right is treated with the synthesized peptide.