

## Product datasheet for **TA312669**

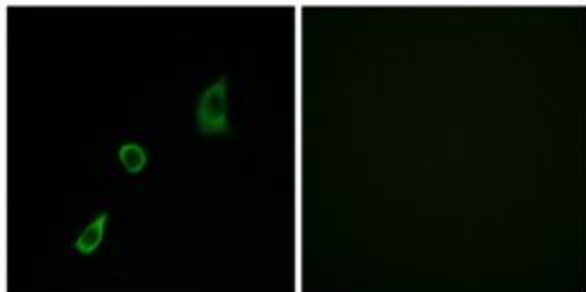
### FGF 23 (FGF23) Rabbit Polyclonal Antibody

#### Product data:

Product Type:	Primary Antibodies
Applications:	IF
Recommended Dilution:	IF: 1:100~1:500, ELISA: 1:20000
Reactivity:	Human, Mouse, Rat
Host:	Rabbit
Isotype:	IgG
Clonality:	Polyclonal
Immunogen:	The antiserum was produced against synthesized peptide derived from internal of human FGF23.
Formulation:	Phosphate buffered saline (without Mg <sup>2+</sup> and Ca <sup>2+</sup> ), pH 7.4, 150mM NaCl, 0.02% sodium azide and 50% glycerol.
Concentration:	lot specific
Purification:	The antibody was affinity-purified from rabbit antiserum by affinity-chromatography using epitope-specific immunogen.
Conjugation:	Unconjugated
Storage:	Store at -20°C as received.
Stability:	Stable for 12 months from date of receipt.
Gene Name:	fibroblast growth factor 23
Database Link:	<a href="#">NP_065689</a> <a href="#">Entrez Gene 64654 MouseEntrez Gene 170583 RatEntrez Gene 8074 Human Q9GZV9</a>
Synonyms:	ADHR; FGFN; HPDR2; HYPF; PHPTC
Note:	FGF23 antibody detects endogenous levels of total FGF23 protein.
Protein Families:	Druggable Genome, Secreted Protein
Protein Pathways:	MAPK signaling pathway, Melanoma, Pathways in cancer, Regulation of actin cytoskeleton



[View online »](#)

**Product images:**

Immunofluorescence analysis of HuvEc cells, using FGF23 antibody. The picture on the right is treated with the synthesized peptide.