

Product datasheet for **TA312664**

MYL7 Rabbit Polyclonal Antibody

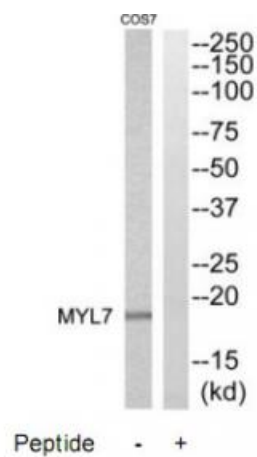
Product data:

| | |
|-----------------------|---|
| Product Type: | Primary Antibodies |
| Applications: | WB |
| Recommended Dilution: | WB: 1:500~1:3000, ELISA: 1:40000 |
| Reactivity: | Mouse, Human, Rat |
| Host: | Rabbit |
| Isotype: | IgG |
| Clonality: | Polyclonal |
| Immunogen: | The antiserum was produced against synthesized peptide derived from internal of human MYL7. |
| Formulation: | Phosphate buffered saline (without Mg ²⁺ and Ca ²⁺), pH 7.4, 150mM NaCl, 0.02% sodium azide and 50% glycerol. |
| Concentration: | lot specific |
| Purification: | The antibody was affinity-purified from rabbit antiserum by affinity-chromatography using epitope-specific immunogen. |
| Conjugation: | Unconjugated |
| Storage: | Store at -20°C as received. |
| Stability: | Stable for 12 months from date of receipt. |
| Gene Name: | myosin light chain 7 |
| Database Link: | NP_067046 Entrez Gene 17898 Mouse Entrez Gene 289759 Rat Entrez Gene 58498 Human Q01449 |
| Synonyms: | MYL2A; MYLC2A |
| Note: | MYL7 antibody detects endogenous levels of total MYL7 protein. |
| Protein Families: | Druggable Genome |
| Protein Pathways: | Focal adhesion, Leukocyte transendothelial migration, Regulation of actin cytoskeleton, Tight junction |



[View online »](#)

Product images:



Western blot analysis of extracts from COS7 cells, using MYL7 antibody. The lane on the right is treated with the synthesized peptide.