

## Product datasheet for **TA312653**

### PDRG1 Rabbit Polyclonal Antibody

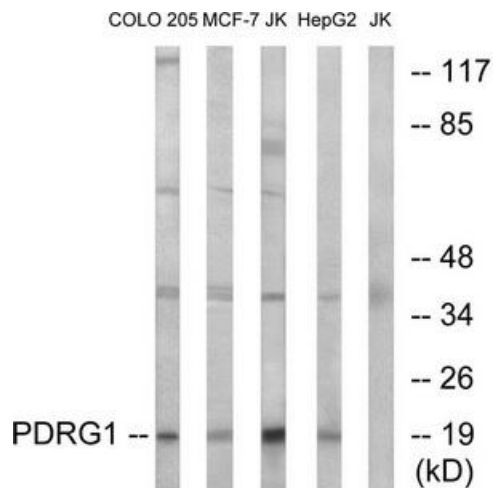
#### Product data:

Product Type:	Primary Antibodies
Applications:	WB
Recommended Dilution:	WB: 1:500~1:3000, ELISA: 1:40000
Reactivity:	Human, Mouse, Rat
Host:	Rabbit
Isotype:	IgG
Clonality:	Polyclonal
Immunogen:	The antiserum was produced against synthesized peptide derived from internal of human PDRG1.
Formulation:	Phosphate buffered saline (without Mg <sup>2+</sup> and Ca <sup>2+</sup> ), pH 7.4, 150mM NaCl, 0.02% sodium azide and 50% glycerol.
Concentration:	lot specific
Purification:	The antibody was affinity-purified from rabbit antiserum by affinity-chromatography using epitope-specific immunogen.
Conjugation:	Unconjugated
Storage:	Store at -20°C as received.
Stability:	Stable for 12 months from date of receipt.
Gene Name:	p53 and DNA damage regulated 1
Database Link:	<a href="#">NP_110442</a> <a href="#">Entrez Gene 68559 Mouse</a> <a href="#">Entrez Gene 296278 Rat</a> <a href="#">Entrez Gene 81572 Human</a> <a href="#">Q9NUG6</a>
Synonyms:	C20orf126; PDRG
Note:	PDRG1 antibody detects endogenous levels of total PDRG1 protein.

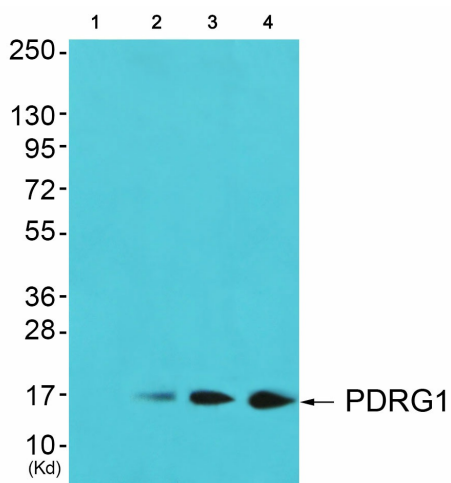


[View online »](#)

Product images:



Western blot analysis of extracts from COLO cells, MCF-7 cells, Jurkat cells and HepG2 cells, using PDRG1 antibody. The lane on the right is treated with the synthesized peptide.



Western blot analysis of extracts from JK cells (Lane 2), cos-7 cells (Lane 3) and 293 cells (Lane 4), using PDRG1 Antibody. The lane on the left is treated with synthesized peptide.