

## Product datasheet for **TA312651**

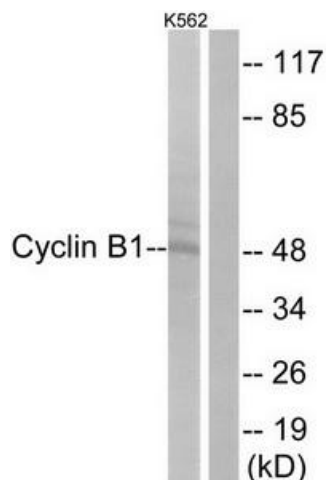
### Cyclin B1 (CCNB1) Rabbit Polyclonal Antibody

#### Product data:

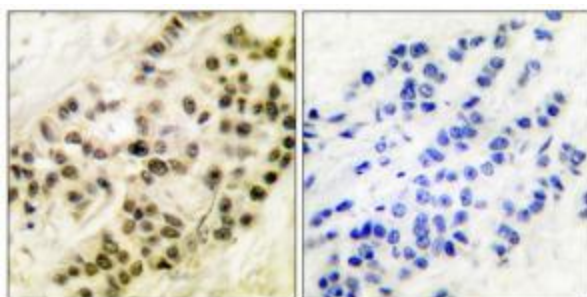
Product Type:	Primary Antibodies
Applications:	IF, IHC, WB
Recommended Dilution:	WB: 1:500~1:3000, IHC: 1:50~1:100, IF: 1:100~1:500, ELISA: 1:20000
Reactivity:	Human, Mouse
Host:	Rabbit
Isotype:	IgG
Clonality:	Polyclonal
Immunogen:	The antiserum was produced against synthesized non-phosphopeptide derived from human Cyclin B1 around the phosphorylation site of serine 126 (T-A-S-P-S).
Formulation:	Phosphate buffered saline (without Mg <sup>2+</sup> and Ca <sup>2+</sup> ), pH 7.4, 150mM NaCl, 0.02% sodium azide and 50% glycerol.
Concentration:	lot specific
Purification:	The antibody was affinity-purified from rabbit antiserum by affinity-chromatography using epitope-specific immunogen.
Conjugation:	Unconjugated
Storage:	Store at -20°C as received.
Stability:	Stable for 12 months from date of receipt.
Gene Name:	cyclin B1
Database Link:	<a href="#">NP_114172</a> <a href="#">Entrez Gene 268697 Mouse</a> <a href="#">Entrez Gene 891 Human</a> <a href="#">P14635</a>
Synonyms:	CCNB
Note:	Cyclin B1 (Ab-126) antibody detects endogenous levels of total Cyclin B1 protein.
Protein Families:	Druggable Genome, Stem cell - Pluripotency
Protein Pathways:	Cell cycle, Oocyte meiosis, p53 signaling pathway, Progesterone-mediated oocyte maturation



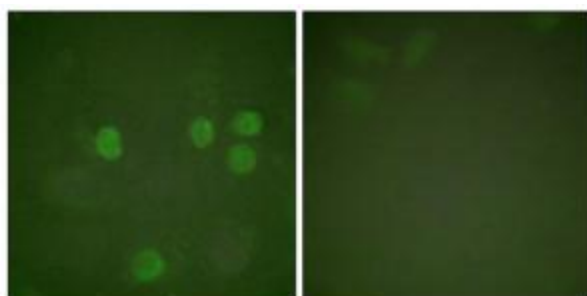
[View online »](#)

**Product images:**


Western blot analysis of extracts from HeLa cells, treated with serum (10%, 15min), using Cyclin B1 (Ab-126) antibody (#BOO68, Line 1 and 2). The lane on the right is treated with the synthesized peptide.



Immunohistochemical analysis of paraffin-embedded human breast carcinoma tissue using Cyclin B1 (Ab-126) antibody (#BOO68). The picture on the right is treated with the synthesized peptide.



Immunofluorescence analysis of HeLa cells, treated with Forskolin (40nM, 30mins), using Cyclin B1 (Ab-126) antibody (#BOO68). The picture on the right is treated with the synthesized peptide.