

Product datasheet for **TA312648**

Cyclin B1 (CCNB1) Rabbit Polyclonal Antibody

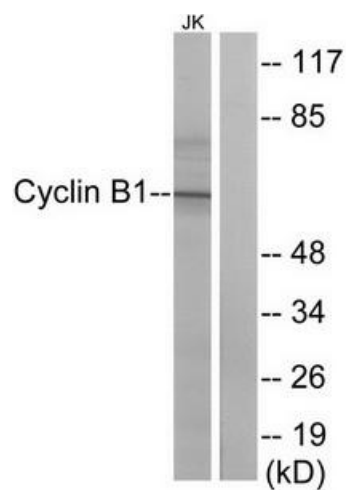
Product data:

Product Type:	Primary Antibodies
Applications:	WB
Recommended Dilution:	WB: 1:500~1:3000, ELISA: 1:1000
Reactivity:	Human, Mouse
Host:	Rabbit
Isotype:	IgG
Clonality:	Polyclonal
Immunogen:	The antiserum was produced against synthesized non-phosphopeptide derived from human Cyclin B1 around the phosphorylation site of serine 147 (A-F-SP-D-V).
Formulation:	Phosphate buffered saline (without Mg ²⁺ and Ca ²⁺), pH 7.4, 150mM NaCl, 0.02% sodium azide and 50% glycerol.
Concentration:	lot specific
Purification:	The antibody was affinity-purified from rabbit antiserum by affinity-chromatography using epitope-specific immunogen.
Conjugation:	Unconjugated
Storage:	Store at -20°C as received.
Stability:	Stable for 12 months from date of receipt.
Gene Name:	cyclin B1
Database Link:	NP_114172 Entrez Gene 268697 Mouse Entrez Gene 891 Human P14635
Synonyms:	CCNB
Note:	Cyclin B1 (Ab-147) antibody detects endogenous levels of total Cyclin B1 protein.
Protein Families:	Druggable Genome, Stem cell - Pluripotency
Protein Pathways:	Cell cycle, Oocyte meiosis, p53 signaling pathway, Progesterone-mediated oocyte maturation



[View online »](#)

Product images:



Western blot analysis of extracts from Jurkat cells, treated with UV (15mins), using Cyclin B1 (Ab-147) antibody. The lane on the right is treated with the synthesized peptide.