

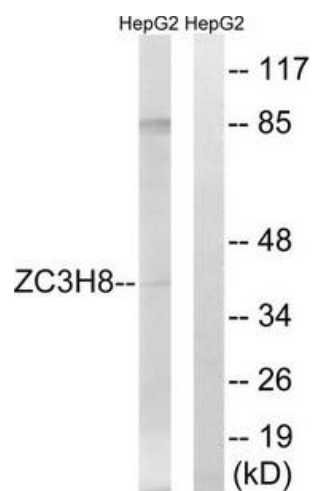
## Product datasheet for **TA312645**

### ZC3H8 Rabbit Polyclonal Antibody

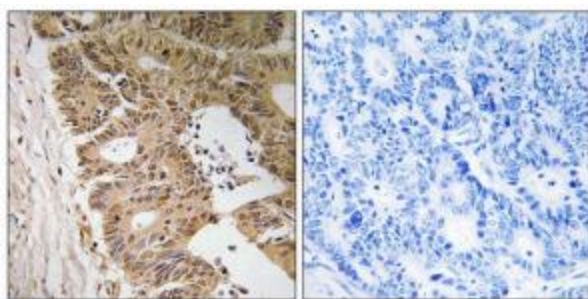
#### Product data:

<b>Product Type:</b>	Primary Antibodies
<b>Applications:</b>	IHC, WB
<b>Recommended Dilution:</b>	WB: 1:500~1:3000, IHC: 1:50~1:100, ELISA: 1:40000
<b>Reactivity:</b>	Human
<b>Host:</b>	Rabbit
<b>Isotype:</b>	IgG
<b>Clonality:</b>	Polyclonal
<b>Immunogen:</b>	The antiserum was produced against synthesized peptide derived from internal of human ZC3H8.
<b>Formulation:</b>	Phosphate buffered saline (without Mg <sup>2+</sup> and Ca <sup>2+</sup> ), pH 7.4, 150mM NaCl, 0.02% sodium azide and 50% glycerol.
<b>Concentration:</b>	lot specific
<b>Purification:</b>	The antibody was affinity-purified from rabbit antiserum by affinity-chromatography using epitope-specific immunogen.
<b>Conjugation:</b>	Unconjugated
<b>Storage:</b>	Store at -20°C as received.
<b>Stability:</b>	Stable for 12 months from date of receipt.
<b>Gene Name:</b>	zinc finger CCCH-type containing 8
<b>Database Link:</b>	<a href="#">NP_115883</a> <a href="#">Entrez Gene 84524 Human</a> <a href="#">Q8N5P1</a>
<b>Synonyms:</b>	Flizl; ZC3HDC8
<b>Note:</b>	ZC3H8 antibody detects endogenous levels of total ZC3H8 protein.



**Product images:**

Western blot analysis of extracts from HepG2 cells, using ZC3H8 antibody. The lane on the right is treated with the synthesized peptide.



Immunohistochemistry analysis of paraffin-embedded human colon carcinoma tissue, using ZC3H8 antibody. The picture on the right is treated with the synthesized peptide.