

Product datasheet for **TA312643**

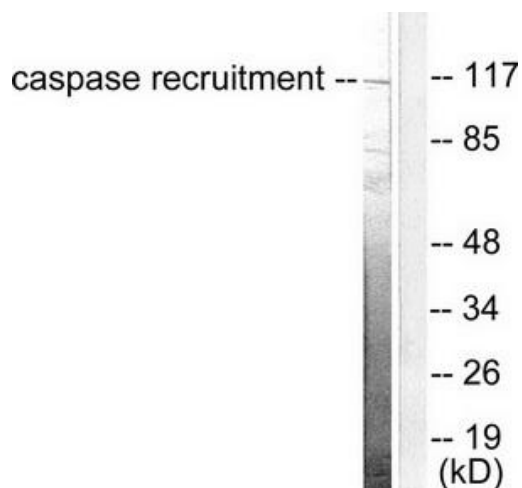
CARD6 Rabbit Polyclonal Antibody

Product data:

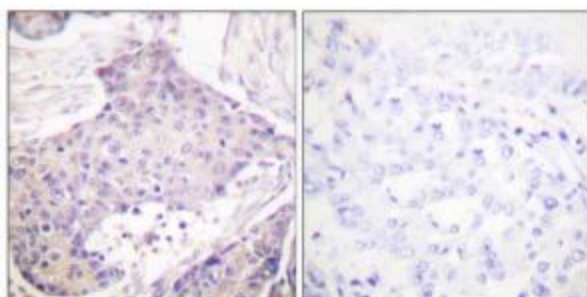
Product Type:	Primary Antibodies
Applications:	IF, IHC, WB
Recommended Dilution:	WB: 1:500~1:3000, IHC: 1:50~1:100, IF: 1:500~1:1000, ELISA: 1:10000
Reactivity:	Human
Host:	Rabbit
Isotype:	IgG
Clonality:	Polyclonal
Immunogen:	The antiserum was produced against synthesized peptide derived from human CARD6.
Formulation:	Phosphate buffered saline (without Mg ²⁺ and Ca ²⁺), pH 7.4, 150mM NaCl, 0.02% sodium azide and 50% glycerol.
Concentration:	lot specific
Purification:	The antibody was affinity-purified from rabbit antiserum by affinity-chromatography using epitope-specific immunogen.
Conjugation:	Unconjugated
Storage:	Store at -20°C as received.
Stability:	Stable for 12 months from date of receipt.
Gene Name:	caspase recruitment domain family member 6
Database Link:	NP_115976 Entrez Gene 84674 Human Q9BX69
Synonyms:	CINCIN1
Note:	CARD6 antibody detects endogenous levels of total CARD6 protein.
Protein Families:	Druggable Genome
Protein Pathways:	NOD-like receptor signaling pathway



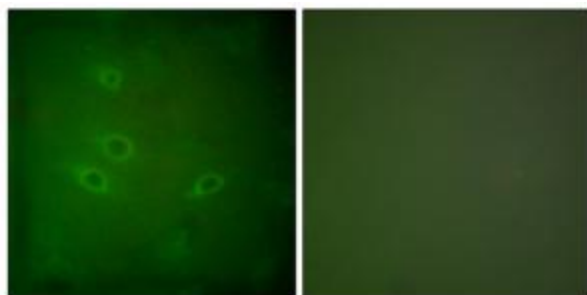
[View online »](#)

Product images:

Western blot analysis of extracts from HeLa cells, using CARD6 antibody. The lane on the right is treated with the synthesized peptide.



Immunohistochemical analysis of paraffin-embedded human breast carcinoma tissue using CARD6 antibody. The picture on the right is treated with the synthesized peptide.



Immunofluorescence analysis of HeLa cells, using CARD6 antibody. The picture on the right is treated with the synthesized peptide.