

Product datasheet for TA312641

alpha Internexin (INA) Rabbit Polyclonal Antibody

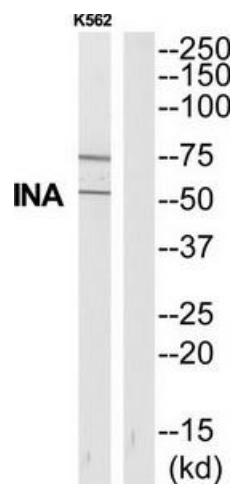
Product data:

Product Type:	Primary Antibodies
Applications:	WB
Recommended Dilution:	WB: 1:500~1:3000, ELISA: 1:40000
Reactivity:	Human, Mouse, Rat
Host:	Rabbit
Isotype:	IgG
Clonality:	Polyclonal
Immunogen:	The antiserum was produced against synthesized peptide derived from Internal of human INA.
Formulation:	Phosphate buffered saline (without Mg ²⁺ and Ca ²⁺), pH 7.4, 150mM NaCl, 0.02% sodium azide and 50% glycerol.
Concentration:	lot specific
Purification:	The antibody was affinity-purified from rabbit antiserum by affinity-chromatography using epitope-specific immunogen.
Conjugation:	Unconjugated
Storage:	Store at -20°C as received.
Stability:	Stable for 12 months from date of receipt.
Gene Name:	internexin neuronal intermediate filament protein alpha
Database Link:	NP_116116 Entrez Gene 24503 Rat Entrez Gene 226180 Mouse Entrez Gene 9118 Human Q16352
Synonyms:	NEF5; NF-66; TXBP-1
Note:	INA antibody detects endogenous levels of total INA protein.



[View online »](#)

Product images:



Western blot analysis of extracts from K562 cells, using INA antibody. The lane on the right is treated with the synthesized peptide.