

Product datasheet for **TA312637**

Caspase 9 (CASP9) Rabbit Polyclonal Antibody

Product data:

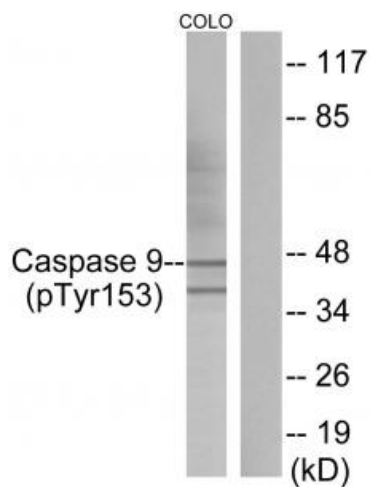
Product Type:	Primary Antibodies
Applications:	IF, WB
Recommended Dilution:	WB: 1:500~1:3000, IF: 1:100~1:500, ELISA: 1:10000
Reactivity:	Human, Mouse, Rat
Modifications:	Phospho-specific
Host:	Rabbit
Isotype:	IgG
Clonality:	Polyclonal
Immunogen:	The antiserum was produced against synthesized phosphopeptide derived from human Caspase 9 around the phosphorylation site of tyrosine 153 (L-A-YP-I-L).
Formulation:	Phosphate buffered saline (without Mg ²⁺ and Ca ²⁺), pH 7.4, 150mM NaCl, 0.02% sodium azide and 50% glycerol.
Concentration:	lot specific
Purification:	The antibody was affinity-purified from rabbit antiserum by affinity-chromatography using epitope-specific immunogen.
Conjugation:	Unconjugated
Storage:	Store at -20°C as received.
Stability:	Stable for 12 months from date of receipt.
Gene Name:	caspase 9
Database Link:	NP_001220 Entrez Gene 12371 Mouse Entrez Gene 58918 Rat Entrez Gene 842 Human P55211
Synonyms:	APAF-3; APAF3; ICE-LAP6; MCH6; PPP1R56
Note:	Caspase 9 (Phospho-Tyr153) antibody detects endogenous levels of Caspase 9 only when phosphorylated at tyrosine 153.
Protein Families:	Druggable Genome, Protease, Stem cell - Pluripotency



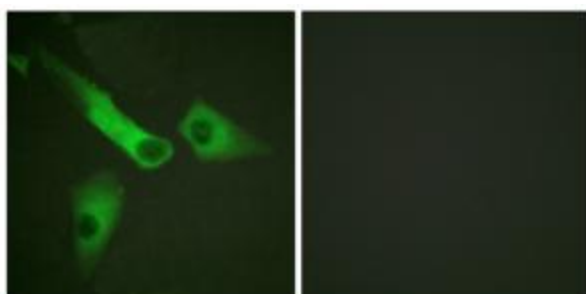
[View online »](#)

Protein Pathways:

Alzheimer's disease, Amyotrophic lateral sclerosis (ALS), Apoptosis, Colorectal cancer, Endometrial cancer, Huntington's disease, Non-small cell lung cancer, p53 signaling pathway, Pancreatic cancer, Parkinson's disease, Pathways in cancer, Prostate cancer, Small cell lung cancer, VEGF signaling pathway, Viral myocarditis

Product images:


Western blot analysis of extracts from COLO205 cells, using Caspase 9 (Phospho-Tyr153) antibody. The lane on the right is treated with the synthesized peptide.



Immunofluorescence analysis of HeLa cells, using Caspase 9 (Phospho-Tyr153) antibody. The picture on the right is treated with the synthesized peptide.