

Product datasheet for **TA312627**

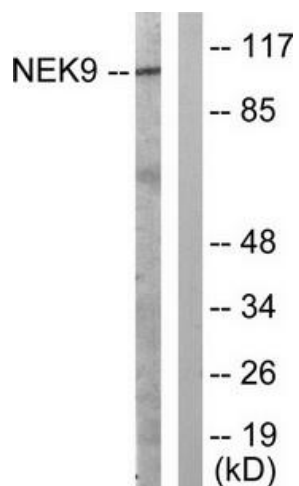
NEK9 Rabbit Polyclonal Antibody

Product data:

Product Type:	Primary Antibodies
Applications:	WB
Recommended Dilution:	WB: 1:500~1:3000, ELISA: 1:20000
Reactivity:	Human, Mouse
Host:	Rabbit
Isotype:	IgG
Clonality:	Polyclonal
Immunogen:	The antiserum was produced against synthesized non-phosphopeptide derived from human NEK9 around the phosphorylation site of threonine 210 (A-E-TP-L-V).
Formulation:	Phosphate buffered saline (without Mg ²⁺ and Ca ²⁺), pH 7.4, 150mM NaCl, 0.02% sodium azide and 50% glycerol.
Concentration:	lot specific
Purification:	The antibody was affinity-purified from rabbit antiserum by affinity-chromatography using epitope-specific immunogen.
Conjugation:	Unconjugated
Storage:	Store at -20°C as received.
Stability:	Stable for 12 months from date of receipt.
Gene Name:	NIMA related kinase 9
Database Link:	NP_149107 Entrez Gene 217718 Mouse Entrez Gene 91754 Human Q8TD19
Synonyms:	APUG; LCCS10; NC; NERCC; NERCC1
Note:	NEK9 (Ab-210) antibody detects endogenous levels of total NEK9 protein.
Protein Families:	Druggable Genome, Protein Kinase



[View online »](#)

Product images:

Western blot analysis of extracts from A549 cells, using NEK9 (Ab-210) antibody. The lane on the right is treated with the synthesized peptide.