

Product datasheet for **TA312620**

Caspase 1 (CASP1) Rabbit Polyclonal Antibody

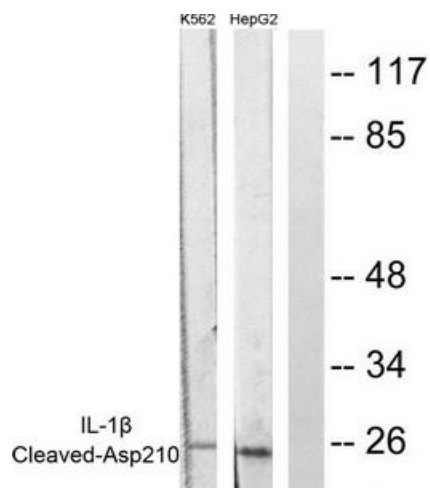
Product data:

Product Type:	Primary Antibodies
Applications:	IHC, WB
Recommended Dilution:	WB: 1:500~1:3000, IHC: 1:50~100, ELISA: 1:10000
Reactivity:	Human
Host:	Rabbit
Isotype:	IgG
Clonality:	Polyclonal
Immunogen:	The antiserum was produced against synthesized peptide derived from human Caspase 1.
Formulation:	Phosphate buffered saline (without Mg ²⁺ and Ca ²⁺), pH 7.4, 150mM NaCl, 0.02% sodium azide and 50% glycerol.
Concentration:	lot specific
Purification:	The antibody was affinity-purified from rabbit antiserum by affinity-chromatography using epitope-specific immunogen.
Conjugation:	Unconjugated
Storage:	Store at -20°C as received.
Stability:	Stable for 12 months from date of receipt.
Gene Name:	caspase 1
Database Link:	NP_150634 Entrez Gene 834 Human P29466
Synonyms:	ICE; IL1BC; P45
Note:	Caspase 1 (Cleaved-Asp210) antibody detects endogenous levels of fragment of activated Caspase 1 resulting from cleavage adjacent to Asp210.
Protein Families:	Druggable Genome, Protease
Protein Pathways:	Amyotrophic lateral sclerosis (ALS), Cytosolic DNA-sensing pathway, NOD-like receptor signaling pathway

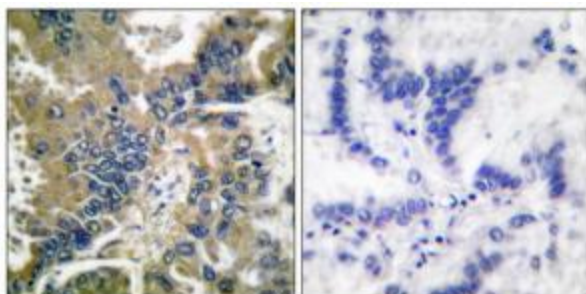


[View online »](#)

Product images:



Western blot analysis of extracts from K562 cells and HepG2 cells, using Caspase 1 (Cleaved-Asp210) antibody (#TA312620). The lane on the right is treated with the synthesized peptide.



Immunohistochemical analysis of paraffin-embedded human lung carcinoma tissue, using Caspase 1 (Cleaved-Asp210) antibody (#TA312620). The picture on the right is treated with the synthesized peptide.