

## Product datasheet for **TA312616**

### Caspase-7 (CASP7) Rabbit Polyclonal Antibody

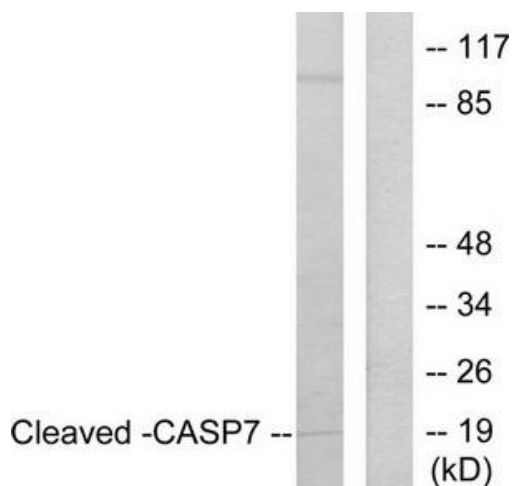
#### Product data:

Product Type:	Primary Antibodies
Applications:	IHC, WB
Recommended Dilution:	WB: 1:500~1:3000, IHC: 1:50~1:100, ELISA: 1:5000
Reactivity:	Human, Mouse
Host:	Rabbit
Isotype:	IgG
Clonality:	Polyclonal
Immunogen:	The antiserum was produced against synthesized peptide derived from human CASP7.
Formulation:	Phosphate buffered saline (without Mg <sup>2+</sup> and Ca <sup>2+</sup> ), pH 7.4, 150mM NaCl, 0.02% sodium azide and 50% glycerol.
Concentration:	lot specific
Purification:	The antibody was affinity-purified from rabbit antiserum by affinity-chromatography using epitope-specific immunogen.
Conjugation:	Unconjugated
Storage:	Store at -20°C as received.
Stability:	Stable for 12 months from date of receipt.
Gene Name:	caspase 7
Database Link:	<a href="#">NP_203125</a> <a href="#">Entrez Gene 12369 Mouse</a> <a href="#">Entrez Gene 840 Human</a> <a href="#">P55210</a>
Synonyms:	CASP-7; CMH-1; ICE-LAP3; LICE2; MCH3
Note:	Caspase 7 (Cleaved-Asp198) Antibody reacts with N-half of cleavage form at Asp198.
Protein Families:	Druggable Genome, Protease
Protein Pathways:	Alzheimer's disease, Apoptosis

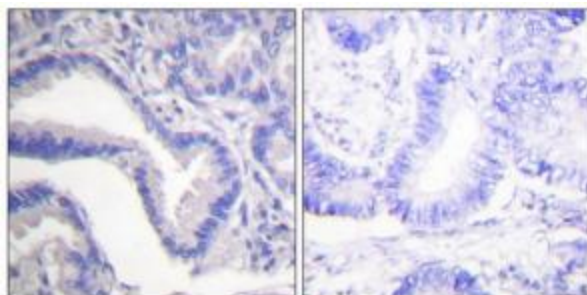


[View online »](#)

**Product images:**



Western blot analysis of extracts from Jurkat cells, treated with Etoposide (25 $\mu$ M, 24hours), using Caspase 7 (Cleaved-Asp198) Antibody. The lane on the right is treated with the synthesized peptide.



Immunohistochemical analysis of paraffin-embedded human lung carcinoma tissue using Caspase 7 (Cleaved-Asp198) Antibody. The picture on the right is treated with the synthesized peptide.