

## Product datasheet for **TA312615S**

### Myosin light chain kinase (MYLK) Rabbit Polyclonal Antibody

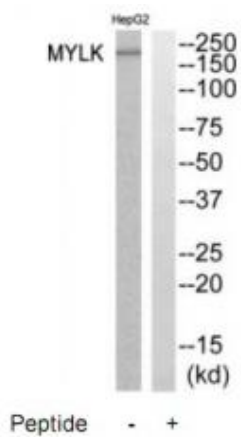
#### Product data:

Product Type:	Primary Antibodies
Applications:	WB
Recommended Dilution:	WB: 1:500~1:3000, ELISA: 1:45000
Reactivity:	Human, Mouse, Rat
Host:	Rabbit
Isotype:	IgG
Clonality:	Polyclonal
Immunogen:	The antiserum was produced against synthesized peptide derived from internal of human MYLK.
Formulation:	Phosphate buffered saline (without Mg <sup>2+</sup> and Ca <sup>2+</sup> ), pH 7.4, 150mM NaCl, 0.02% sodium azide and 50% glycerol.
Concentration:	lot specific
Purification:	The antibody was affinity-purified from rabbit antiserum by affinity-chromatography using epitope-specific immunogen.
Conjugation:	Unconjugated
Storage:	Store at -20°C as received.
Stability:	Stable for 12 months from date of receipt.
Gene Name:	myosin light chain kinase
Database Link:	<a href="#">NP_444259</a> <a href="#">Entrez Gene 107589 MouseEntrez Gene 288057 RatEntrez Gene 4638 Human Q15746</a>
Synonyms:	AAT7; KRP; MLCK; MLCK1; MLCK108; MLCK210; MSTP083; MYLK1; smMLCK
Note:	MYLK antibody detects endogenous levels of total MYLK protein.
Protein Families:	Druggable Genome, Protein Kinase
Protein Pathways:	Calcium signaling pathway, Focal adhesion, Regulation of actin cytoskeleton, Vascular smooth muscle contraction



[View online »](#)

## Product images:



Western blot analysis of extracts from HepG2 cells, using MYLK antibody. The lane on the right is treated with the synthesized peptide.