

Product datasheet for **TA312606**

RAD51 Rabbit Polyclonal Antibody

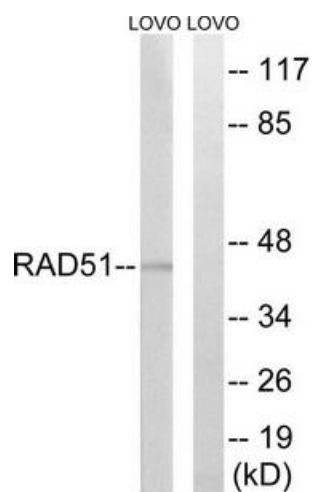
Product data:

| | |
|------------------------------|--|
| Product Type: | Primary Antibodies |
| Applications: | WB |
| Recommended Dilution: | WB: 1:500~1:3000, ELISA: 1:20000 |
| Reactivity: | Human, Mouse |
| Host: | Rabbit |
| Isotype: | IgG |
| Clonality: | Polyclonal |
| Immunogen: | The antiserum was produced against synthesized non-phosphopeptide derived from human RAD51 around the phosphorylation site of tyrosine 315 (K-I-YP-D-S). |
| Formulation: | Phosphate buffered saline (without Mg ²⁺ and Ca ²⁺), pH 7.4, 150mM NaCl, 0.02% sodium azide and 50% glycerol. |
| Concentration: | lot specific |
| Purification: | The antibody was affinity-purified from rabbit antiserum by affinity-chromatography using epitope-specific immunogen. |
| Conjugation: | Unconjugated |
| Storage: | Store at -20°C as received. |
| Stability: | Stable for 12 months from date of receipt. |
| Gene Name: | RAD51 recombinase |
| Database Link: | NP_597994 Entrez Gene 19361 Mouse Entrez Gene 5888 Human Q06609 |
| Synonyms: | BRCC5; FANCR; HRAD51; HsRad51; HsT16930; MRMV2; RAD51A; RECA |
| Note: | RAD51 (Ab-315) antibody detects endogenous levels of total RAD51 protein. |
| Protein Families: | Druggable Genome, Stem cell - Pluripotency, Transcription Factors |
| Protein Pathways: | Homologous recombination, Pancreatic cancer, Pathways in cancer |



[View online »](#)

Product images:



Western blot analysis of extracts from LOVO cells, using RAD51 (Ab-315) antibody. The lane on the right is treated with the synthesized peptide.