

## Product datasheet for **TA312603**

### Rad51L1 (RAD51B) Rabbit Polyclonal Antibody

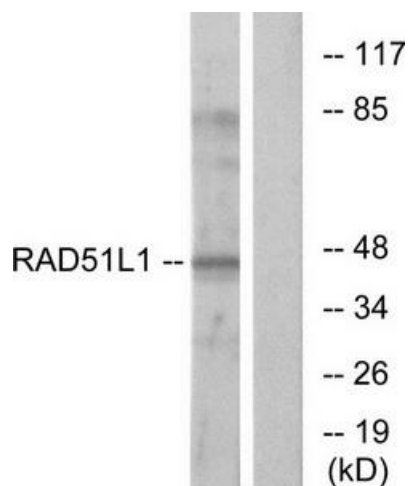
#### Product data:

Product Type:	Primary Antibodies
Applications:	IHC, WB
Recommended Dilution:	WB: 1:500~1:3000, IHC: 1:50~1:100, ELISA: 1:40000
Reactivity:	Human, Mouse
Host:	Rabbit
Isotype:	IgG
Clonality:	Polyclonal
Immunogen:	The antiserum was produced against synthesized peptide derived from internal of human RAD51L1.
Formulation:	Phosphate buffered saline (without Mg <sup>2+</sup> and Ca <sup>2+</sup> ), pH 7.4, 150mM NaCl, 0.02% sodium azide and 50% glycerol.
Concentration:	lot specific
Purification:	The antibody was affinity-purified from rabbit antiserum by affinity-chromatography using epitope-specific immunogen.
Conjugation:	Unconjugated
Storage:	Store at -20°C as received.
Stability:	Stable for 12 months from date of receipt.
Gene Name:	RAD51 paralog B
Database Link:	<a href="#">NP_598193</a> <a href="#">Entrez Gene 19363 Mouse</a> <a href="#">Entrez Gene 5890 Human</a> <a href="#">O15315</a>
Synonyms:	R51H2; RAD51L1; REC2
Note:	RAD51L1 antibody detects endogenous levels of total RAD51L1 protein.
Protein Families:	Druggable Genome
Protein Pathways:	Homologous recombination

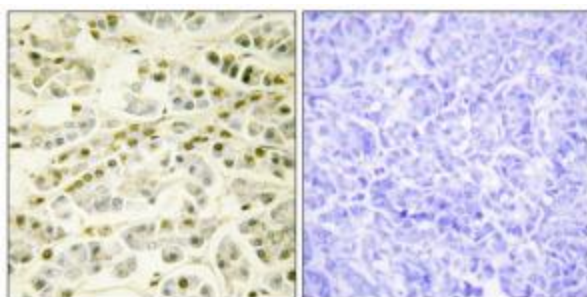


[View online »](#)

## Product images:



Western blot analysis of extracts from COS-7 cells, using RAD51L1 antibody. The lane on the right is treated with the synthesized peptide.



Immunohistochemistry analysis of paraffin-embedded human pancreas tissue using RAD51L1 antibody. The picture on the right is treated with the synthesized peptide.