

## Product datasheet for **TA312600**

### **BAX Rabbit Polyclonal Antibody**

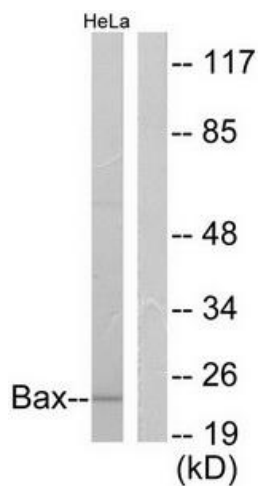
#### **Product data:**

<b>Product Type:</b>	Primary Antibodies
<b>Applications:</b>	IHC, WB
<b>Recommended Dilution:</b>	WB: 1:500~1:3000, IHC: 1:50~1:100, ELISA: 1:10000
<b>Reactivity:</b>	Human, Rat
<b>Host:</b>	Rabbit
<b>Isotype:</b>	IgG
<b>Clonality:</b>	Polyclonal
<b>Immunogen:</b>	The antiserum was produced against synthesized peptide derived from human Bax.
<b>Formulation:</b>	Phosphate buffered saline (without Mg <sup>2+</sup> and Ca <sup>2+</sup> ), pH 7.4, 150mM NaCl, 0.02% sodium azide and 50% glycerol.
<b>Concentration:</b>	lot specific
<b>Purification:</b>	The antibody was affinity-purified from rabbit antiserum by affinity-chromatography using epitope-specific immunogen.
<b>Conjugation:</b>	Unconjugated
<b>Storage:</b>	Store at -20°C as received.
<b>Stability:</b>	Stable for 12 months from date of receipt.
<b>Gene Name:</b>	BCL2 associated X protein
<b>Database Link:</b>	<a href="#">NP_620118</a> <a href="#">Entrez Gene 24887 Rat</a> <a href="#">Entrez Gene 581 Human</a> <a href="#">Q07812</a>
<b>Synonyms:</b>	BCL2L4
<b>Note:</b>	Bax antibody detects endogenous levels of total Bax protein.
<b>Protein Families:</b>	Druggable Genome, Transmembrane
<b>Protein Pathways:</b>	Amyotrophic lateral sclerosis (ALS), Apoptosis, Colorectal cancer, Huntington's disease, Neurotrophin signaling pathway, p53 signaling pathway, Pathways in cancer, Prion diseases

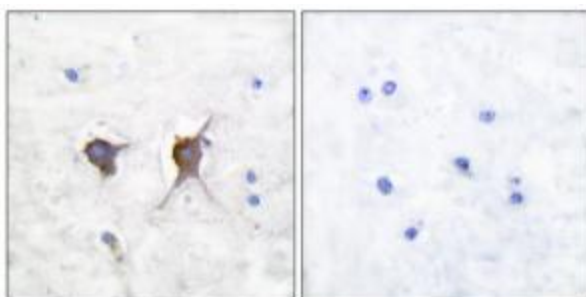


[View online »](#)

## Product images:



Western blot analysis of extracts from 293 cells, using Bax antibody (#TA312600). The lane on the right is treated with the synthesized peptide.



Immunohistochemical analysis of paraffin-embedded human brain tissue using Bax antibody (#TA312600). The picture on the right is treated with the synthesized peptide.