

Product datasheet for **TA312599**

BAX Rabbit Polyclonal Antibody

Product data:

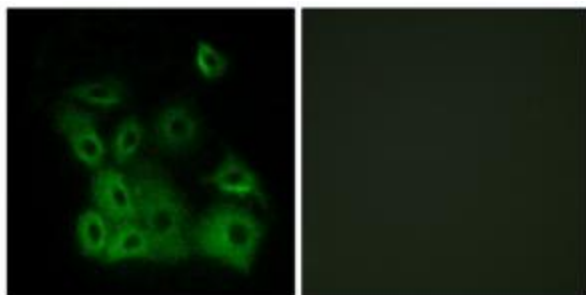
Product Type:	Primary Antibodies
Applications:	IF
Recommended Dilution:	IF: 1:100~1:500, ELISA: 1:40000
Reactivity:	Human, Mouse, Rat
Modifications:	Phospho-specific
Host:	Rabbit
Isotype:	IgG
Clonality:	Polyclonal
Immunogen:	The antiserum was produced against synthesized phosphopeptide derived from human Bax around the phosphorylation site of threonine 167 (F-G-TP-P-T).
Formulation:	Phosphate buffered saline (without Mg ²⁺ and Ca ²⁺), pH 7.4, 150mM NaCl, 0.02% sodium azide and 50% glycerol.
Concentration:	lot specific
Purification:	The antibody was affinity-purified from rabbit antiserum by affinity-chromatography using epitope-specific immunogen.
Conjugation:	Unconjugated
Storage:	Store at -20°C as received.
Stability:	Stable for 12 months from date of receipt.
Gene Name:	BCL2 associated X protein
Database Link:	NP_004315 Entrez Gene 12028 Mouse Entrez Gene 24887 Rat Entrez Gene 581 Human Q07812
Synonyms:	BCL2L4
Note:	Bax (Phospho-Thr167) antibody detects endogenous levels of Bax only when phosphorylated at threonine 167.
Protein Families:	Druggable Genome, Transmembrane



[View online »](#)

Protein Pathways: Amyotrophic lateral sclerosis (ALS), Apoptosis, Colorectal cancer, Huntington's disease, Neurotrophin signaling pathway, p53 signaling pathway, Pathways in cancer, Prion diseases

Product images:



Immunofluorescence analysis of A549 cells, using Bax (Phospho-Thr167) antibody. The picture on the right is treated with the synthesized peptide.