

Product datasheet for **TA312598**

BAX Rabbit Polyclonal Antibody

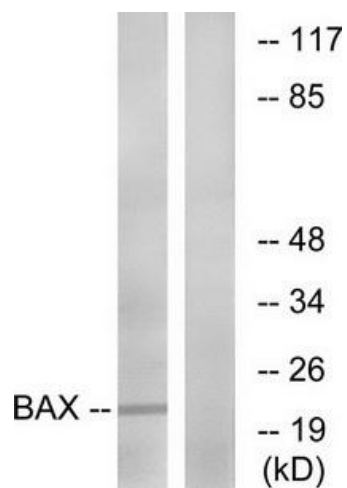
Product data:

Product Type:	Primary Antibodies
Applications:	IF, WB
Recommended Dilution:	WB: 1:500~1:3000, IF: 1:100~1:500, ELISA: 1:1000
Reactivity:	Human, Mouse
Host:	Rabbit
Isotype:	IgG
Clonality:	Polyclonal
Immunogen:	The antiserum was produced against synthesized non-phosphopeptide derived from human Bax around the phosphorylation site of threonine 167 (F-G-TP-P-T)
Formulation:	Phosphate buffered saline (without Mg ²⁺ and Ca ²⁺), pH 7.4, 150mM NaCl, 0.02% sodium azide and 50% glycerol.
Concentration:	lot specific
Purification:	The antibody was affinity-purified from rabbit antiserum by affinity-chromatography using epitope-specific immunogen.
Conjugation:	Unconjugated
Storage:	Store at -20°C as received.
Stability:	Stable for 12 months from date of receipt.
Gene Name:	BCL2 associated X protein
Database Link:	NP_620118 Entrez Gene 12028 Mouse Entrez Gene 581 Human Q07812
Synonyms:	BCL2L4
Note:	Bax (Ab-167) antibody detects endogenous levels of total Bax protein
Protein Families:	Druggable Genome, Transmembrane
Protein Pathways:	Amyotrophic lateral sclerosis (ALS), Apoptosis, Colorectal cancer, Huntington's disease, Neurotrophin signaling pathway, p53 signaling pathway, Pathways in cancer, Prion diseases

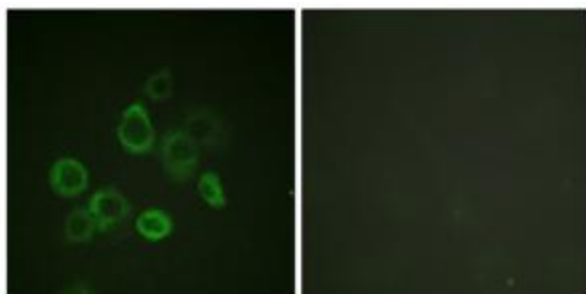


[View online »](#)

Product images:



Western blot analysis of extracts from HepG2 cells, using Bax (Ab-167) antibody. The lane on the right is treated with the synthesized peptide.



Immunofluorescence analysis of LOVO cells, using Bax (Ab-167) antibody. The picture on the right is treated with the synthesized peptide.