

Product datasheet for **TA312596S**

BAX Rabbit Polyclonal Antibody

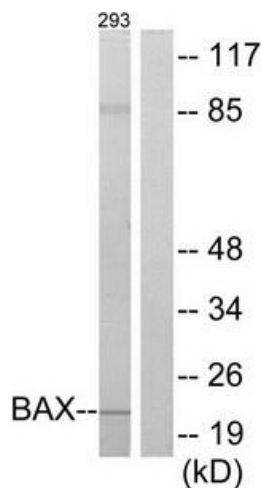
Product data:

Product Type:	Primary Antibodies
Applications:	IF, IHC, WB
Recommended Dilution:	WB: 1:500~1:3000, IF: 1:100~1:500, IHC: 1:50~1:100, ELISA: 1:20000
Reactivity:	Human, Mouse, Rat
Host:	Rabbit
Isotype:	IgG
Clonality:	Polyclonal
Immunogen:	The antiserum was produced against synthesized peptide derived from internal of human BAX.
Formulation:	Phosphate buffered saline (without Mg ²⁺ and Ca ²⁺), pH 7.4, 150mM NaCl, 0.02% sodium azide and 50% glycerol.
Concentration:	lot specific
Purification:	The antibody was affinity-purified from rabbit antiserum by affinity-chromatography using epitope-specific immunogen.
Conjugation:	Unconjugated
Storage:	Store at -20°C as received.
Stability:	Stable for 12 months from date of receipt.
Gene Name:	BCL2 associated X protein
Database Link:	NP_620118 Entrez Gene 12028 MouseEntrez Gene 24887 RatEntrez Gene 581 Human Q07812
Synonyms:	BCL2L4
Note:	BAX antibody detects endogenous levels of total BAX protein.
Protein Families:	Druggable Genome, Transmembrane
Protein Pathways:	Amyotrophic lateral sclerosis (ALS), Apoptosis, Colorectal cancer, Huntington's disease, Neurotrophin signaling pathway, p53 signaling pathway, Pathways in cancer, Prion diseases

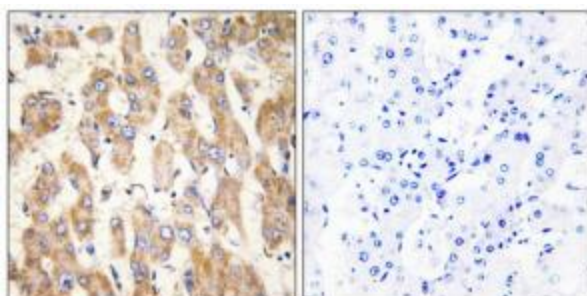


[View online »](#)

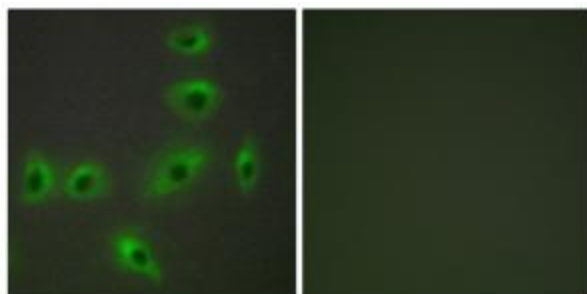
Product images:



Western blot analysis of extracts from 293 cells, using BAX antibody. The lane on the right is treated with the synthesized peptide.



Immunohistochemistry analysis of paraffin-embedded human liver carcinoma tissue using BAX antibody. The picture on the right is treated with the synthesized peptide.



Immunofluorescence analysis of HUVEC cells, using BAX antibody. The picture on the right is treated with the synthesized peptide.