

Product datasheet for **TA312593**

JNK1 (MAPK8) Rabbit Polyclonal Antibody

Product data:

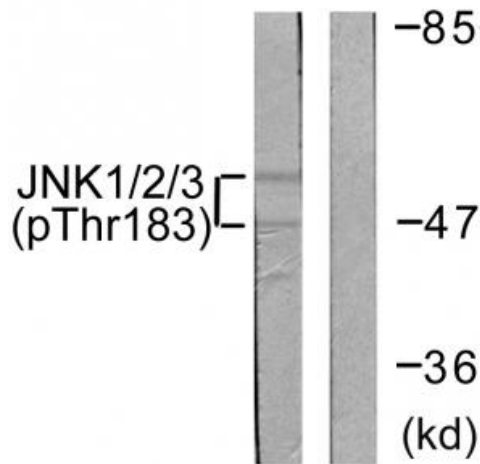
| | |
|-----------------------|--|
| Product Type: | Primary Antibodies |
| Applications: | WB |
| Recommended Dilution: | WB: 1:500~1:3000, ELISA: 1:10000 |
| Reactivity: | Human, Mouse, Rat |
| Modifications: | Phospho-specific |
| Host: | Rabbit |
| Isotype: | IgG |
| Clonality: | Polyclonal |
| Immunogen: | The antiserum was produced against synthesized phosphopeptide derived from human JNK1/2/3 around the phosphorylation site of threonine183/tyrosine 185 (M-M-TP-P-YP-V-V). |
| Formulation: | Phosphate buffered saline (without Mg ²⁺ and Ca ²⁺), pH 7.4, 150mM NaCl, 0.02% sodium azide and 50% glycerol. |
| Concentration: | lot specific |
| Purification: | The antibody was affinity-purified from rabbit antiserum by affinity-chromatography using epitope-specific immunogen. |
| Conjugation: | Unconjugated |
| Storage: | Store at -20°C as received. |
| Stability: | Stable for 12 months from date of receipt. |
| Gene Name: | mitogen-activated protein kinase 8 |
| Database Link: | NP_620637 Entrez Gene 26419 Mouse Entrez Gene 116554 Rat Entrez Gene 5599 Human P45983 |
| Synonyms: | 2; JNK; JNK-46; JNK1; JNK1A2; JNK21B1; PRKM8; SAPK1; SAPK1c |
| Note: | JNK1/2/3 (Phospho-Thr183+Tyr185) antibody detects endogenous levels of JNK1/2/3 only when phosphorylated at threonine183/tyrosine 185. |
| Protein Families: | Druggable Genome, ES Cell Differentiation/IPS, Protein Kinase |



[View online »](#)

Protein Pathways:

Adipocytokine signaling pathway, Colorectal cancer, Epithelial cell signaling in Helicobacter pylori infection, ErbB signaling pathway, Fc epsilon RI signaling pathway, Focal adhesion, GnRH signaling pathway, Insulin signaling pathway, MAPK signaling pathway, Neurotrophin signaling pathway, NOD-like receptor signaling pathway, Pancreatic cancer, Pathways in cancer, Progesterone-mediated oocyte maturation, RIG-I-like receptor signaling pathway, Toll-like receptor signaling pathway, Type II diabetes mellitus, Wnt signaling pathway

Product images:

Western blot analysis of extracts from 293 cells, treated with UV (5mins), using JNK1/2/3 (Phospho-Thr183+Tyr185) antibody. The lane on the right is treated with the synthesized peptide.