

## Product datasheet for **TA312586**

### STAT1 Rabbit Polyclonal Antibody

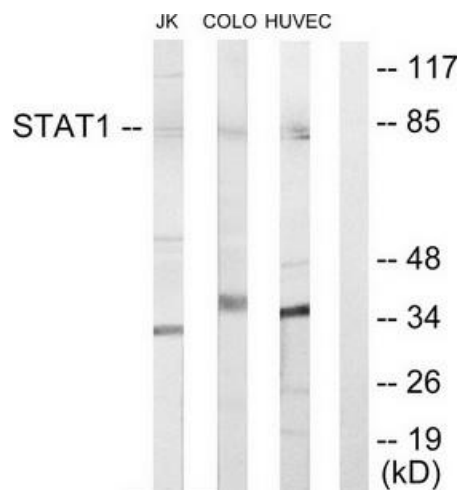
#### Product data:

Product Type:	Primary Antibodies
Applications:	WB
Recommended Dilution:	WB: 1:500~1:3000, ELISA: 1:20000
Reactivity:	Human
Host:	Rabbit
Isotype:	IgG
Clonality:	Polyclonal
Immunogen:	The antiserum was produced against synthesized peptide derived from internal of human STAT1.
Formulation:	Phosphate buffered saline (without Mg <sup>2+</sup> and Ca <sup>2+</sup> ), pH 7.4, 150mM NaCl, 0.02% sodium azide and 50% glycerol.
Concentration:	lot specific
Purification:	The antibody was affinity-purified from rabbit antiserum by affinity-chromatography using epitope-specific immunogen.
Conjugation:	Unconjugated
Storage:	Store at -20°C as received.
Stability:	Stable for 12 months from date of receipt.
Gene Name:	signal transducer and activator of transcription 1
Database Link:	<a href="#">NP_644671</a> <a href="#">Entrez Gene 6772 Human</a> <a href="#">P42224</a>
Synonyms:	CANDF7; IMD31A; IMD31B; IMD31C; ISGF-3; STAT91
Note:	STAT1 antibody detects endogenous levels of total STAT1 protein.
Protein Families:	Druggable Genome, Transcription Factors
Protein Pathways:	Chemokine signaling pathway, Jak-STAT signaling pathway, Pancreatic cancer, Pathways in cancer, Toll-like receptor signaling pathway



[View online »](#)

## Product images:



Western blot analysis of extracts from Jurkat cells, COLO205 cells and HUVEC cells, using STAT1 antibody. The lane on the right is treated with the synthesized peptide.