

Product datasheet for **TA312585**

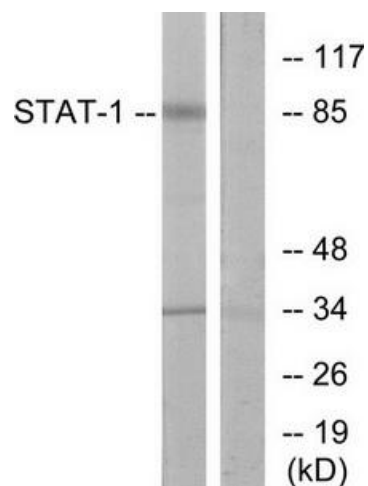
STAT1 Rabbit Polyclonal Antibody

Product data:

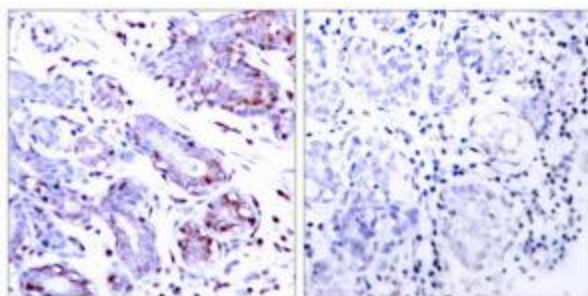
Product Type:	Primary Antibodies
Applications:	IHC, WB
Recommended Dilution:	WB: 1:500~1:3000, IHC: 1:50~1:100, IF: 1:100~1:500, ELISA: 1:10000, IP: Various Dilution
Reactivity:	Human, Mouse, Rat
Host:	Rabbit
Isotype:	IgG
Clonality:	Polyclonal
Immunogen:	The antiserum was produced against synthesized non-phosphopeptide derived from human STAT1 around the phosphorylation site of tyrosine 701.
Formulation:	Phosphate buffered saline (without Mg ²⁺ and Ca ²⁺), pH 7.4, 150mM NaCl, 0.02% sodium azide and 50% glycerol.
Concentration:	lot specific
Purification:	The antibody was affinity-purified from rabbit antiserum by affinity-chromatography using epitope-specific immunogen.
Conjugation:	Unconjugated
Storage:	Store at -20°C as received.
Stability:	Stable for 12 months from date of receipt.
Gene Name:	signal transducer and activator of transcription 1
Database Link:	NP_644671 Entrez Gene 20846 MouseEntrez Gene 25124 RatEntrez Gene 6772 Human P42224
Synonyms:	CANDF7; IMD31A; IMD31B; IMD31C; ISGF-3; STAT91
Note:	STAT1 (Ab-701) antibody detects endogenous levels of total STAT1 protein.
Protein Families:	Druggable Genome, Transcription Factors
Protein Pathways:	Chemokine signaling pathway, Jak-STAT signaling pathway, Pancreatic cancer, Pathways in cancer, Toll-like receptor signaling pathway



[View online »](#)

Product images:

Western blot analysis of extracts from COLO205 cells, using STAT1 (Ab-701) Antibody. The lane on the right is treated with the synthesized peptide.



Immunohistochemistry analysis of paraffin-embedded human breast carcinoma tissue, using STAT1 (Ab-701) Antibody. The picture on the right is treated with the synthesized peptide.