

Product datasheet for **TA312581**

MEK7 (MAP2K7) Rabbit Polyclonal Antibody

Product data:

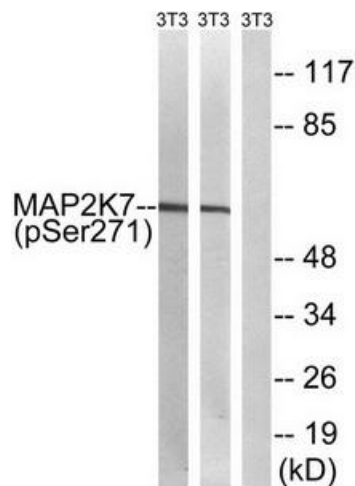
Product Type:	Primary Antibodies
Applications:	IHC, WB
Recommended Dilution:	WB: 1:500~1:3000, IHC: 1:50~1:100, ELISA: 1:20000
Reactivity:	Human, Mouse, Rat
Modifications:	Phospho-specific
Host:	Rabbit
Isotype:	IgG
Clonality:	Polyclonal
Immunogen:	The antiserum was produced against synthesized phosphopeptide derived from human MAP2K7 around the phosphorylation site of serine 271 (V-D-SP-K-A).
Formulation:	Phosphate buffered saline (without Mg ²⁺ and Ca ²⁺), pH 7.4, 150mM NaCl, 0.02% sodium azide and 50% glycerol.
Concentration:	lot specific
Purification:	The antibody was affinity-purified from rabbit antiserum by affinity-chromatography using epitope-specific immunogen.
Conjugation:	Unconjugated
Storage:	Store at -20°C as received.
Stability:	Stable for 12 months from date of receipt.
Gene Name:	mitogen-activated protein kinase kinase 7
Database Link:	NP_660186 Entrez Gene 26400 Mouse Entrez Gene 363855 Rat Entrez Gene 5609 Human O14733
Synonyms:	JNKK2; MAPKK7; MEK; MEK 7; MKK7; PRKMK7; SAPKK-4; SAPKK4
Note:	MAP2K7 (Phospho-Ser271) antibody detects endogenous levels of MAP2K7 only when phosphorylated at serine 271.
Protein Families:	Druggable Genome, Protein Kinase



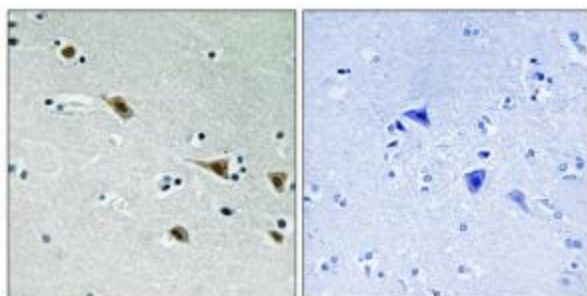
[View online »](#)

Protein Pathways: ErbB signaling pathway, Fc epsilon RI signaling pathway, GnRH signaling pathway, MAPK signaling pathway, Neurotrophin signaling pathway, T cell receptor signaling pathway, Toll-like receptor signaling pathway

Product images:



Western blot analysis of extracts from 3T3 cells treated with insulin (0.01U/ml, 15mins) and 3T3 cells treated with EGF (200ng/ml, 30mins), using MAP2K7 (Phospho-Ser271) antibody. The lane on the right is treated with the synthesized peptide.



Immunohistochemistry analysis of paraffin-embedded human brain tissue, using MAP2K7 (Phospho-Ser271) antibody. The picture on the right is treated with the synthesized peptide.