

## Product datasheet for **TA312579**

### DGKB Rabbit Polyclonal Antibody

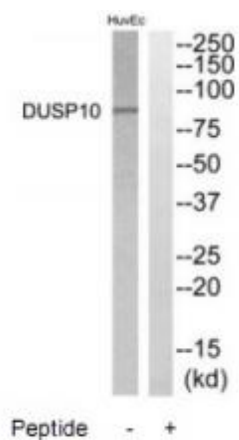
#### Product data:

Product Type:	Primary Antibodies
Applications:	WB
Recommended Dilution:	WB: 1:500~1:3000, ELISA: 1:40000
Reactivity:	Mouse, Human, Rat
Host:	Rabbit
Isotype:	IgG
Clonality:	Polyclonal
Immunogen:	The antiserum was produced against synthesized peptide derived from internal of human DGKB.
Formulation:	Phosphate buffered saline (without Mg <sup>2+</sup> and Ca <sup>2+</sup> ), pH 7.4, 150mM NaCl, 0.02% sodium azide and 50% glycerol.
Concentration:	lot specific
Purification:	The antibody was affinity-purified from rabbit antiserum by affinity-chromatography using epitope-specific immunogen.
Conjugation:	Unconjugated
Storage:	Store at -20°C as received.
Stability:	Stable for 12 months from date of receipt.
Gene Name:	diacylglycerol kinase beta
Database Link:	<a href="#">NP_663733</a> <a href="#">Entrez Gene 54248 Rat</a> <a href="#">Entrez Gene 217480 Mouse</a> <a href="#">Entrez Gene 1607 Human</a> <a href="#">Q9Y6T7</a>
Synonyms:	DAGK2; DGK; DGK-BETA
Note:	DGKB antibody detects endogenous levels of total DGKB protein.
Protein Families:	Druggable Genome
Protein Pathways:	Glycerolipid metabolism, Glycerophospholipid metabolism, Metabolic pathways, Phosphatidylinositol signaling system



[View online »](#)

## Product images:



Western blot analysis of extracts from HuvEC cells, using DGKB antibody. The lane on the right is treated with the synthesized peptide.