

Product datasheet for **TA312577**

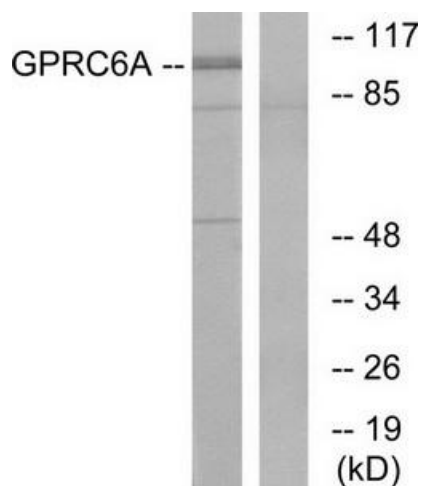
GPRC6A Rabbit Polyclonal Antibody

Product data:

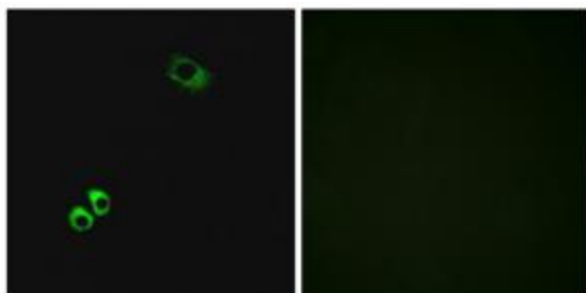
Product Type:	Primary Antibodies
Applications:	IF, WB
Recommended Dilution:	WB: 1:500~1:3000, IF: 1:100~1:500, ELISA: 1:1000
Reactivity:	Human
Host:	Rabbit
Isotype:	IgG
Clonality:	Polyclonal
Immunogen:	The antiserum was produced against synthesized peptide derived from internal of human GPC6A.
Formulation:	Phosphate buffered saline (without Mg ²⁺ and Ca ²⁺), pH 7.4, 150mM NaCl, 0.02% sodium azide and 50% glycerol.
Concentration:	lot specific
Purification:	The antibody was affinity-purified from rabbit antiserum by affinity-chromatography using epitope-specific immunogen.
Conjugation:	Unconjugated
Storage:	Store at -20°C as received.
Stability:	Stable for 12 months from date of receipt.
Gene Name:	G protein-coupled receptor class C group 6 member A
Database Link:	NP_683766 Entrez Gene 222545 Human Q5T6X5
Synonyms:	bA86F4.3; GPCR
Note:	GPC6A antibody detects endogenous levels of total GPC6A protein.
Protein Families:	Druggable Genome, Transmembrane



[View online »](#)

Product images:

Western blot analysis of extracts from Jurkat cells, using GPC6A antibody. The lane on the right is treated with the synthesized peptide.



Immunofluorescence analysis of MCF-7 cells, using GPC6A antibody. The picture on the right is treated with the synthesized peptide.