

Product datasheet for **TA312571**

KCNH1 Rabbit Polyclonal Antibody

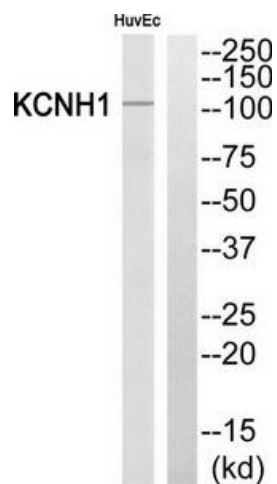
Product data:

Product Type:	Primary Antibodies
Applications:	WB
Recommended Dilution:	WB: 1:500~1:3000, ELISA: 1:5000
Reactivity:	Human, Mouse, Rat
Host:	Rabbit
Isotype:	IgG
Clonality:	Polyclonal
Immunogen:	The antiserum was produced against synthesized peptide derived from internal of human KCNH1.
Formulation:	Phosphate buffered saline (without Mg ²⁺ and Ca ²⁺), pH 7.4, 150mM NaCl, 0.02% sodium azide and 50% glycerol.
Concentration:	lot specific
Purification:	The antibody was affinity-purified from rabbit antiserum by affinity-chromatography using epitope-specific immunogen.
Conjugation:	Unconjugated
Storage:	Store at -20°C as received.
Stability:	Stable for 12 months from date of receipt.
Gene Name:	potassium voltage-gated channel subfamily H member 1
Database Link:	NP_758872 Entrez Gene 16510 Mouse Entrez Gene 65198 Rat Entrez Gene 3756 Human O95259
Synonyms:	EAG; EAG1; h-eag; hEAG1; Kv10.1; TMBTS; ZLS1
Note:	KCNH1 antibody detects endogenous levels of total KCNH1 protein.
Protein Families:	Druggable Genome, Ion Channels: Potassium, Transmembrane



[View online »](#)

Product images:



Western blot analysis of extracts from HuvEc cells, using KCNH1 antibody. The lane on the right is treated with the synthesized peptide.