

Product datasheet for **TA312564**

MOB4A (MOB1B) Rabbit Polyclonal Antibody

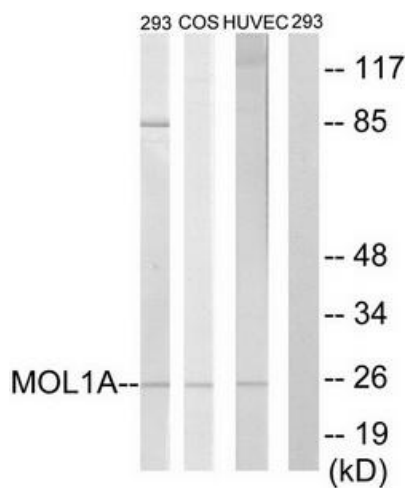
Product data:

Product Type:	Primary Antibodies
Applications:	WB
Recommended Dilution:	WB: 1:500~1:3000, ELISA: 1:40000
Reactivity:	Human, Mouse
Host:	Rabbit
Isotype:	IgG
Clonality:	Polyclonal
Immunogen:	The antiserum was produced against synthesized peptide derived from internal of human MOL1A.
Formulation:	Phosphate buffered saline (without Mg ²⁺ and Ca ²⁺), pH 7.4, 150mM NaCl, 0.02% sodium azide and 50% glycerol.
Concentration:	lot specific
Purification:	The antibody was affinity-purified from rabbit antiserum by affinity-chromatography using epitope-specific immunogen.
Conjugation:	Unconjugated
Storage:	Store at -20°C as received.
Stability:	Stable for 12 months from date of receipt.
Gene Name:	MOB kinase activator 1B
Database Link:	NP_775739 Entrez Gene 68473 Mouse Entrez Gene 92597 Human Q7L9L4
Synonyms:	MATS2; MOB4A; MOBKL1A
Note:	MOL1A antibody detects endogenous levels of total MOL1A protein.



[View online »](#)

Product images:



Western blot analysis of extracts from 293 cells, COS-7 cells and HUVEC cells all treated with IFN (2500U/ml, 30mins), using MOL1A antibody. The lane on the right is treated with the synthesized peptide.