

Product datasheet for **TA312552**

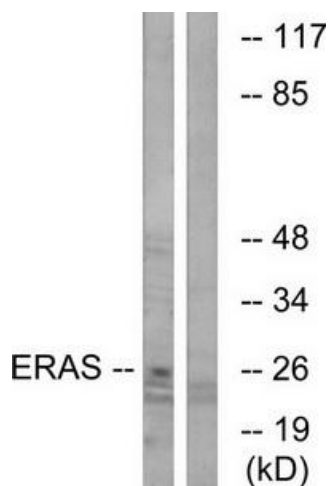
ERAS Rabbit Polyclonal Antibody

Product data:

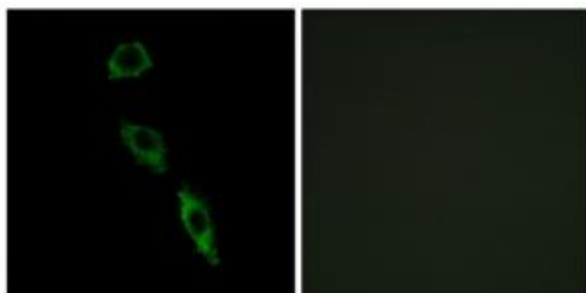
Product Type:	Primary Antibodies
Applications:	IF, WB
Recommended Dilution:	WB: 1:500~1:3000, IF: 1:100~1:500, ELISA: 1:20000
Reactivity:	Human
Host:	Rabbit
Isotype:	IgG
Clonality:	Polyclonal
Immunogen:	The antiserum was produced against synthesized peptide derived from C-terminal of human ERAS.
Formulation:	Phosphate buffered saline (without Mg ²⁺ and Ca ²⁺), pH 7.4, 150mM NaCl, 0.02% sodium azide and 50% glycerol.
Concentration:	lot specific
Purification:	The antibody was affinity-purified from rabbit antiserum by affinity-chromatography using epitope-specific immunogen.
Conjugation:	Unconjugated
Storage:	Store at -20°C as received.
Stability:	Stable for 12 months from date of receipt.
Gene Name:	ES cell expressed Ras
Database Link:	NP_853510 Entrez Gene 3266 Human Q7Z444
Synonyms:	HRAS2; HRASP
Note:	ERAS antibody detects endogenous levels of total ERAS protein.
Protein Families:	Druggable Genome



[View online »](#)

Product images:


Western blot analysis of extracts from Jurkat cells, using ERAS antibody. The lane on the right is treated with the synthesized peptide.



Immunofluorescence analysis of A549 cells, using ERAS antibody. The picture on the right is treated with the synthesized peptide.