

## Product datasheet for **TA312550**

### CCNB1IP1 Rabbit Polyclonal Antibody

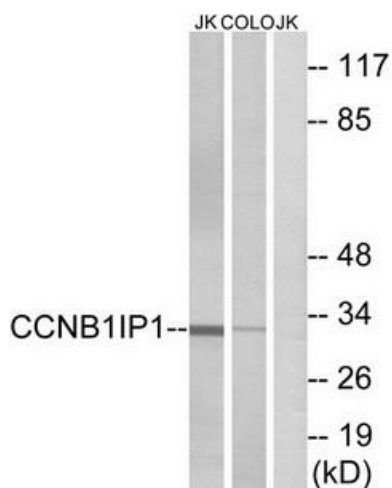
#### Product data:

Product Type:	Primary Antibodies
Applications:	WB
Recommended Dilution:	WB: 1:500~1:3000, ELISA: 1:40000
Reactivity:	Human
Host:	Rabbit
Isotype:	IgG
Clonality:	Polyclonal
Immunogen:	The antiserum was produced against synthesized peptide derived from internal of human CCNB1IP1.
Formulation:	Phosphate buffered saline (without Mg <sup>2+</sup> and Ca <sup>2+</sup> ), pH 7.4, 150mM NaCl, 0.02% sodium azide and 50% glycerol.
Concentration:	lot specific
Purification:	The antibody was affinity-purified from rabbit antiserum by affinity-chromatography using epitope-specific immunogen.
Conjugation:	Unconjugated
Storage:	Store at -20°C as received.
Stability:	Stable for 12 months from date of receipt.
Gene Name:	cyclin B1 interacting protein 1
Database Link:	<a href="#">NP_878269</a> <a href="#">Entrez Gene 57820 Human</a> <a href="#">Q9NPC3</a>
Synonyms:	C14orf18; HEI10
Note:	CCNB1IP1 antibody detects endogenous levels of total CCNB1IP1 protein.

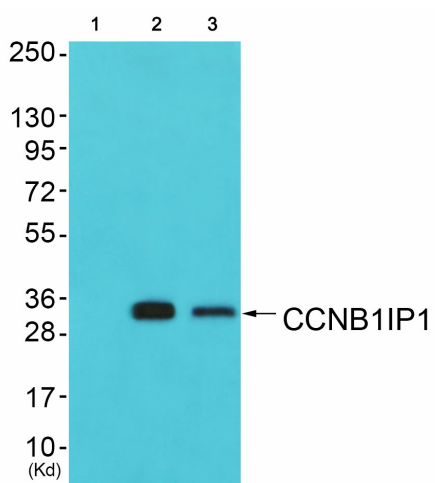


[View online »](#)

Product images:



Western blot analysis of extracts from Jurkat cells and COLO cells, using CCNB1IP1 antibody. The lane on the right is treated with the synthesized peptide.



Western blot analysis of extracts from HuvEc cells (Lane 2) and HepG2 cells (Lane 3), using CCNB1IP1 Antibody. The lane on the left is treated with synthesized peptide.