

## Product datasheet for **TA312525**

### **BACH1 Rabbit Polyclonal Antibody**

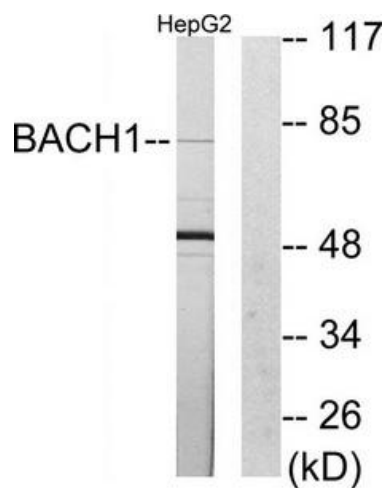
#### **Product data:**

<b>Product Type:</b>	Primary Antibodies
<b>Applications:</b>	IF, WB
<b>Recommended Dilution:</b>	WB: 1:500~1:3000, IF: 1:100~1:500, ELISA: 1:20000
<b>Reactivity:</b>	Human
<b>Host:</b>	Rabbit
<b>Isotype:</b>	IgG
<b>Clonality:</b>	Polyclonal
<b>Immunogen:</b>	The antiserum was produced against synthesized peptide derived from internal of human BACH1.
<b>Formulation:</b>	Phosphate buffered saline (without Mg <sup>2+</sup> and Ca <sup>2+</sup> ), pH 7.4, 150mM NaCl, 0.02% sodium azide and 50% glycerol.
<b>Concentration:</b>	lot specific
<b>Purification:</b>	The antibody was affinity-purified from rabbit antiserum by affinity-chromatography using epitope-specific immunogen.
<b>Conjugation:</b>	Unconjugated
<b>Storage:</b>	Store at -20°C as received.
<b>Stability:</b>	Stable for 12 months from date of receipt.
<b>Gene Name:</b>	BTB domain and CNC homolog 1
<b>Database Link:</b>	<a href="#">NP_996749</a> <a href="#">Entrez Gene 571 Human</a> <a href="#">O14867</a>
<b>Synonyms:</b>	BACH-1; BTBD24
<b>Note:</b>	BACH1 antibody detects endogenous levels of total BACH1 protein.
<b>Protein Families:</b>	Transcription Factors

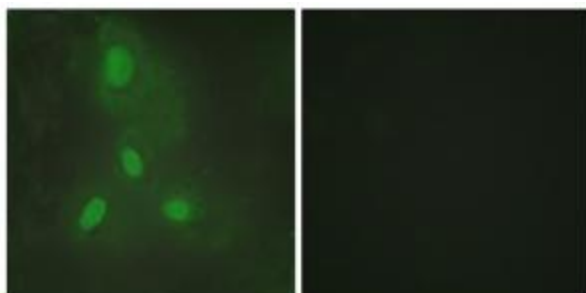


[View online »](#)

## Product images:



Western blot analysis of extracts from HeLa cells, HepG2 cells and 293 cells, using BACH1 antibody. The lane on the right is treated with the synthesized peptide.



Immunofluorescence analysis of HeLa cells, using BACH1 antibody. The picture on the right is treated with the synthesized peptide.