

## Product datasheet for **TA312520**

### PKC delta (PRKCD) Rabbit Polyclonal Antibody

#### Product data:

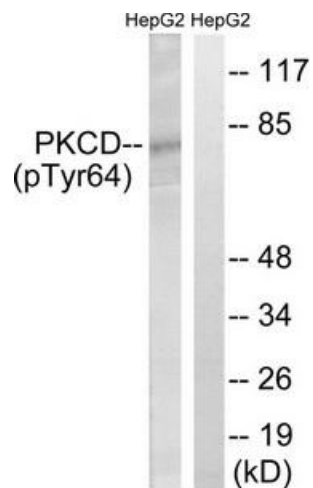
Product Type:	Primary Antibodies
Applications:	WB
Recommended Dilution:	WB: 1:500~1:3000, ELISA: 1:10000
Reactivity:	Human, Mouse, Rat
Modifications:	Phospho-specific
Host:	Rabbit
Isotype:	IgG
Clonality:	Polyclonal
Immunogen:	The antiserum was produced against synthesized phosphopeptide derived from human PKCD around the phosphorylation site of tyrosine 64 (H-I-YP-E-G).
Formulation:	Phosphate buffered saline (without Mg <sup>2+</sup> and Ca <sup>2+</sup> ), pH 7.4, 150mM NaCl, 0.02% sodium azide and 50% glycerol.
Concentration:	lot specific
Purification:	The antibody was affinity-purified from rabbit antiserum by affinity-chromatography using epitope-specific immunogen.
Conjugation:	Unconjugated
Storage:	Store at -20°C as received.
Stability:	Stable for 12 months from date of receipt.
Gene Name:	protein kinase C delta
Database Link:	<a href="#">NP_006245</a> <a href="#">Entrez Gene 18753 Mouse</a> <a href="#">Entrez Gene 170538 Rat</a> <a href="#">Entrez Gene 5580 Human</a> <a href="#">Q05655</a>
Synonyms:	ALPS3; CVID9; MAY1; nPKC-delta; PKCD
Note:	PKCD (Phospho-Tyr64) antibody detects endogenous levels of PKCD only when phosphorylated at tyrosine 64.
Protein Families:	Druggable Genome, Protein Kinase



[View online »](#)

**Protein Pathways:**

Chemokine signaling pathway, Fc epsilon RI signaling pathway, Fc gamma R-mediated phagocytosis, GnRH signaling pathway, Neurotrophin signaling pathway, Tight junction, Type II diabetes mellitus, Vascular smooth muscle contraction

**Product images:**

Western blot analysis of extracts from HepG2 cells, treated with PMA (125ng/ml, 30mins), using PKCD (Phospho-Tyr64) antibody. The lane on the right is treated with the synthesized peptide.