

Product datasheet for **TA312515**

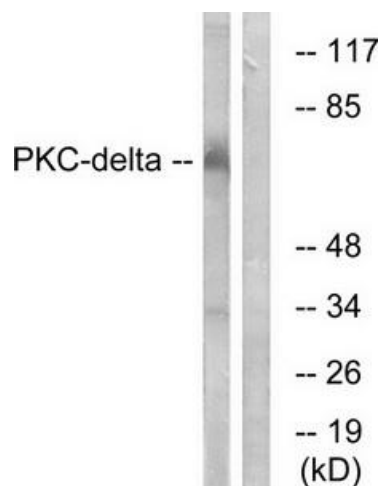
PKC delta (PRKCD) Rabbit Polyclonal Antibody

Product data:

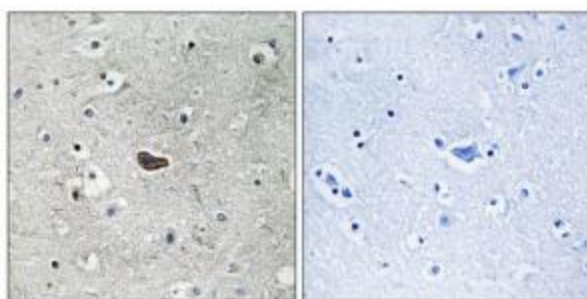
Product Type:	Primary Antibodies
Applications:	IHC, WB
Recommended Dilution:	WB: 1:500~1:3000, IHC: 1:50~1:100, ELISA: 1:10000
Reactivity:	Human, Mouse, Rat
Host:	Rabbit
Isotype:	IgG
Clonality:	Polyclonal
Immunogen:	The antiserum was produced against synthesized non-phosphopeptide derived from human PKCd around the phosphorylation site of serine 645 (R-L-SP-Y-S).
Formulation:	Phosphate buffered saline (without Mg ²⁺ and Ca ²⁺), pH 7.4, 150mM NaCl, 0.02% sodium azide and 50% glycerol.
Concentration:	lot specific
Purification:	The antibody was affinity-purified from rabbit antiserum by affinity-chromatography using epitope-specific immunogen.
Conjugation:	Unconjugated
Storage:	Store at -20°C as received.
Stability:	Stable for 12 months from date of receipt.
Gene Name:	protein kinase C delta
Database Link:	NP_997704 Entrez Gene 18753 Mouse Entrez Gene 170538 Rat Entrez Gene 5580 Human Q05655
Synonyms:	ALPS3; CVID9; MAY1; nPKC-delta; PKCD
Note:	PKC. (Ab-645) antibody detects endogenous levels of total PKC. protein.
Protein Families:	Druggable Genome, Protein Kinase
Protein Pathways:	Chemokine signaling pathway, Fc epsilon RI signaling pathway, Fc gamma R-mediated phagocytosis, GnRH signaling pathway, Neurotrophin signaling pathway, Tight junction, Type II diabetes mellitus, Vascular smooth muscle contraction



[View online »](#)

Product images:

Western blot analysis of extracts from MCF7 cells, using PKC delta (Ab-645) Antibody. The lane on the right is treated with the synthesized peptide.



Immunohistochemistry analysis of paraffin-embedded human brain tissue, using PKC delta (Ab-645) Antibody. The picture on the right is treated with the synthesized peptide.