

## Product datasheet for **TA312513**

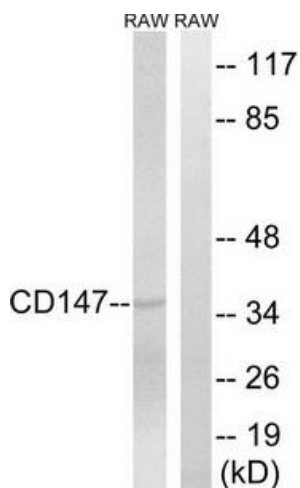
### CD147 (BSG) Rabbit Polyclonal Antibody

#### Product data:

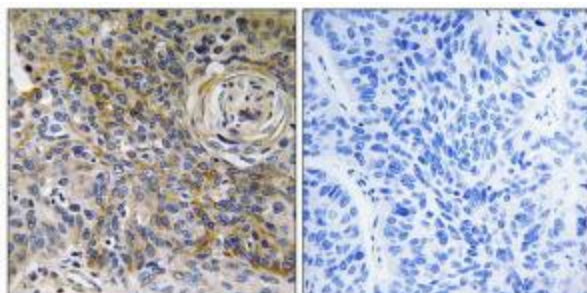
Product Type:	Primary Antibodies
Applications:	IHC, WB
Recommended Dilution:	WB: 1:500~1:3000, IHC: 1:50~1:100, ELISA: 1:10000
Reactivity:	Human, Mouse, Rat
Host:	Rabbit
Isotype:	IgG
Clonality:	Polyclonal
Immunogen:	The antiserum was produced against synthesized peptide derived from C-terminal of human CD147.
Formulation:	Phosphate buffered saline (without Mg <sup>2+</sup> and Ca <sup>2+</sup> ), pH 7.4, 150mM NaCl, 0.02% sodium azide and 50% glycerol.
Concentration:	lot specific
Purification:	The antibody was affinity-purified from rabbit antiserum by affinity-chromatography using epitope-specific immunogen.
Conjugation:	Unconjugated
Storage:	Store at -20°C as received.
Stability:	Stable for 12 months from date of receipt.
Gene Name:	basigin (Ok blood group)
Database Link:	<a href="#">NP_940993</a> <a href="#">Entrez Gene 12215 MouseEntrez Gene 25246 RatEntrez Gene 682 Human P35613</a>
Synonyms:	5F7; CD147; EMMPRIN; OK; TCSF
Note:	CD147 antibody detects endogenous levels of total CD147 protein.
Protein Families:	Druggable Genome, ES Cell Differentiation/IPS, Transmembrane



[View online »](#)

**Product images:**

Western blot analysis of extracts from RAW cells, using CD147 antibody. The lane on the right is treated with the synthesized peptide.



Immunohistochemistry analysis of paraffin-embedded human brain tissue using CD147 antibody. The picture on the right is treated with the synthesized peptide.