

Product datasheet for **TA312511**

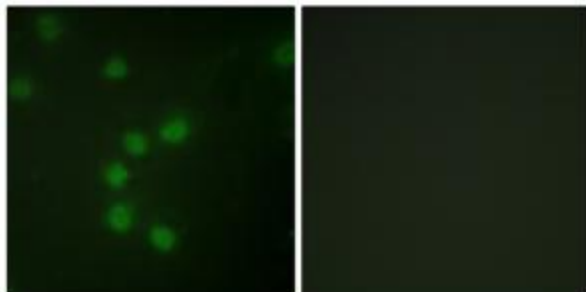
Telomerase reverse transcriptase (TERT) Rabbit Polyclonal Antibody

Product data:

Product Type:	Primary Antibodies
Applications:	IF
Recommended Dilution:	IF: 1:500~1:1000, ELISA: 1:1000
Reactivity:	Human
Host:	Rabbit
Isotype:	IgG
Clonality:	Polyclonal
Immunogen:	The antiserum was produced against synthesized peptide derived from Internal of human Telomerase.
Formulation:	Phosphate buffered saline (without Mg ²⁺ and Ca ²⁺), pH 7.4, 150mM NaCl, 0.02% sodium azide and 50% glycerol.
Concentration:	lot specific
Purification:	The antibody was affinity-purified from rabbit antiserum by affinity-chromatography using epitope-specific immunogen.
Conjugation:	Unconjugated
Storage:	Store at -20°C as received.
Stability:	Stable for 12 months from date of receipt.
Gene Name:	telomerase reverse transcriptase
Database Link:	NP_937986 Entrez Gene 7015 Human O14746
Synonyms:	EST2; hEST2; TCS1; telomerase catalytic subunit; telomerase reverse transcriptase; TP2; TRT
Note:	Telomerase antibody detects endogenous levels of total Telomerase protein.
Protein Families:	Druggable Genome



[View online »](#)

Product images:

Immunofluorescence analysis of HUVEC cells, using Telomerase antibody. The picture on the right is treated with the synthesized peptide.