

## Product datasheet for **TA312510**

### Aquaporin 1 (AQP1) Rabbit Polyclonal Antibody

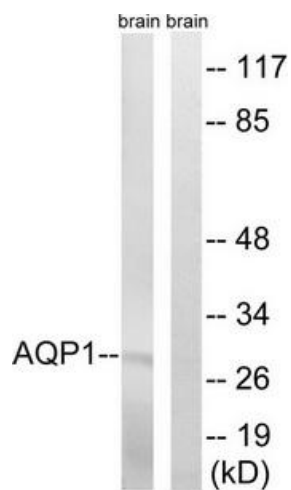
#### Product data:

Product Type:	Primary Antibodies
Applications:	WB
Recommended Dilution:	WB: 1:500~1:3000, ELISA: 1:40000
Reactivity:	Human, Mouse, Rat
Host:	Rabbit
Isotype:	IgG
Clonality:	Polyclonal
Immunogen:	The antiserum was produced against synthesized peptide derived from internal of human AQP1.
Formulation:	Phosphate buffered saline (without Mg <sup>2+</sup> and Ca <sup>2+</sup> ), pH 7.4, 150mM NaCl, 0.02% sodium azide and 50% glycerol.
Concentration:	lot specific
Purification:	The antibody was affinity-purified from rabbit antiserum by affinity-chromatography using epitope-specific immunogen.
Conjugation:	Unconjugated
Storage:	Store at -20°C as received.
Stability:	Stable for 12 months from date of receipt.
Gene Name:	aquaporin 1 (Colton blood group)
Database Link:	<a href="#">NP_932766</a> <a href="#">Entrez Gene 11826 MouseEntrez Gene 25240 RatEntrez Gene 358 Human P29972</a>
Synonyms:	AQP-CHIP; CHIP28; CO
Note:	AQP1 antibody detects endogenous levels of total AQP1 protein.
Protein Families:	Druggable Genome, Ion Channels: Other, Transmembrane



[View online »](#)

## Product images:



Western blot analysis of extracts from rat brain cells, using AQP1 antibody. The lane on the right is treated with the synthesized peptide.