

Product datasheet for **TA312507**

MSK1 (RPS6KA5) Rabbit Polyclonal Antibody

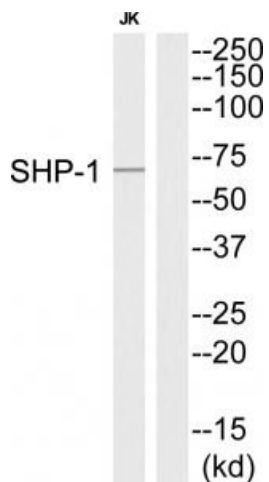
Product data:

Product Type:	Primary Antibodies
Applications:	WB
Recommended Dilution:	WB: 1:500~1:3000, ELISA: 1:10000
Reactivity:	Human
Host:	Rabbit
Isotype:	IgG
Clonality:	Polyclonal
Immunogen:	The antiserum was produced against synthesized peptide derived from C-terminal of human SHP-1.
Formulation:	Phosphate buffered saline (without Mg ²⁺ and Ca ²⁺), pH 7.4, 150mM NaCl, 0.02% sodium azide and 50% glycerol.
Concentration:	lot specific
Purification:	The antibody was affinity-purified from rabbit antiserum by affinity-chromatography using epitope-specific immunogen.
Conjugation:	Unconjugated
Storage:	Store at -20°C as received.
Stability:	Stable for 12 months from date of receipt.
Gene Name:	ribosomal protein S6 kinase A5
Database Link:	NP_872198 Entrez Gene 9252 Human O75582
Synonyms:	MSK1; MSPK1; RLPK
Note:	SHP-1 (Ab-564) antibody detects endogenous levels of total SHP-1 protein.
Protein Families:	Druggable Genome, Protein Kinase, Transcription Factors
Protein Pathways:	Bladder cancer, MAPK signaling pathway, Neurotrophin signaling pathway

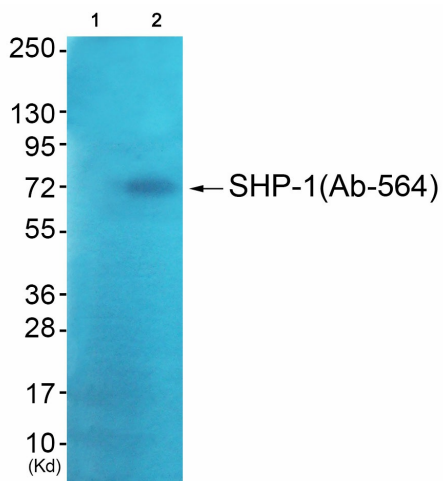


[View online »](#)

Product images:



Western blot analysis of extracts from Jurkat cells, using SHP-1 (Ab-564) antibody. The lane on the right is treated with the synthesized peptide.



Western blot analysis of extracts from JK cells (Lane 2), using SHP-1 (Ab-564) Antibody. The lane on the left is treated with synthesized peptide.