

Product datasheet for **TA312506**

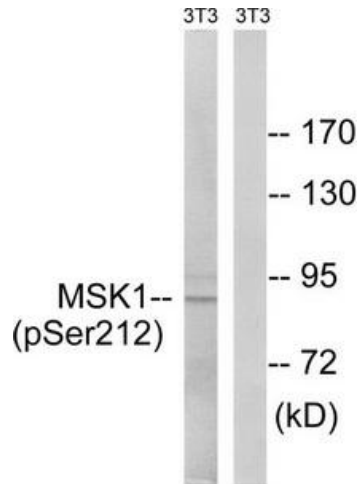
MSK1 (RPS6KA5) Rabbit Polyclonal Antibody

Product data:

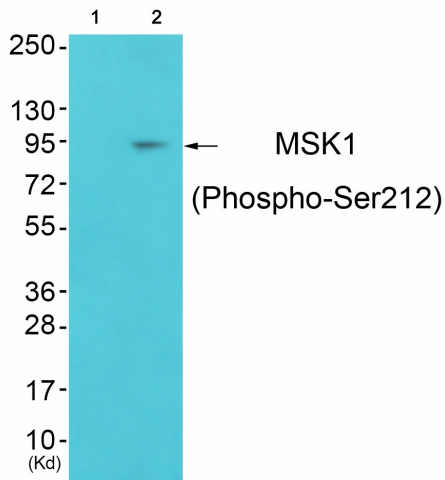
Product Type:	Primary Antibodies
Applications:	IHC, WB
Recommended Dilution:	WB: 1:500~1:3000, IHC: 1:50~1:100, ELISA: 1:40000
Reactivity:	Human, Mouse
Modifications:	Phospho-specific
Host:	Rabbit
Isotype:	IgG
Clonality:	Polyclonal
Immunogen:	The antiserum was produced against synthesized phosphopeptide derived from human MSK1 around the phosphorylation site of serine 212 (A-Y-SP-F-C).
Formulation:	Phosphate buffered saline (without Mg ²⁺ and Ca ²⁺), pH 7.4, 150mM NaCl, 0.02% sodium azide and 50% glycerol.
Concentration:	lot specific
Purification:	The antibody was affinity-purified from rabbit antiserum by affinity-chromatography using epitope-specific immunogen.
Conjugation:	Unconjugated
Storage:	Store at -20°C as received.
Stability:	Stable for 12 months from date of receipt.
Gene Name:	ribosomal protein S6 kinase A5
Database Link:	NP_004746 Entrez Gene 73086 Mouse Entrez Gene 9252 Human O75582
Synonyms:	MSK1; MSPK1; RLPK
Note:	MSK1 (Phospho-Ser212) antibody detects endogenous levels of MSK1 only when phosphorylated at serine 212.
Protein Families:	Druggable Genome, Protein Kinase, Transcription Factors
Protein Pathways:	Bladder cancer, MAPK signaling pathway, Neurotrophin signaling pathway



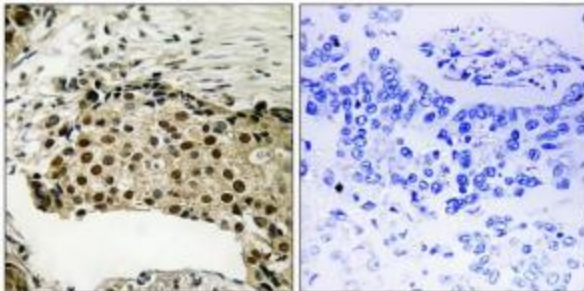
[View online »](#)

Product images:


Western blot analysis of extracts from 3T3 cells, treated with EGF (200ng/ml, 5mins), using MSK1 (Phospho-Ser212) antibody. The lane on the right is treated with the synthesized peptide.



Western blot analysis of extracts from Colo cells (Lane 2), using MSK1 (Phospho-Ser212) Antibody. The lane on the left is treated with synthesized peptide.



Immunohistochemistry analysis of paraffin-embedded human breast carcinoma tissue using MSK1 (Phospho-Ser212) antibody. The picture on the right is treated with the synthesized peptide.