

Product datasheet for **TA312497**

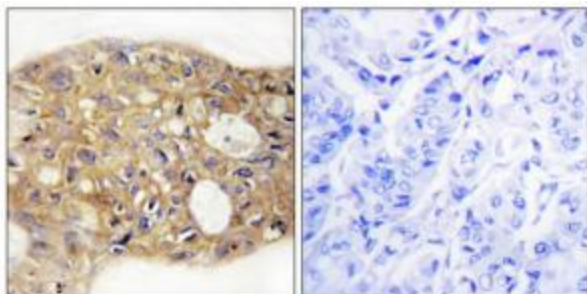
AGR3 Rabbit Polyclonal Antibody

Product data:

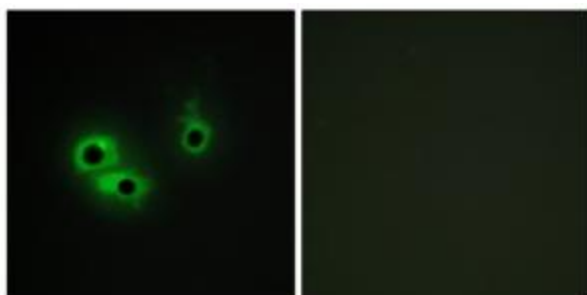
Product Type:	Primary Antibodies
Applications:	IF, IHC
Recommended Dilution:	IHC: 1:50~1:100, IF: 1:100~1:500, ELISA: 1:5000
Reactivity:	Human, Mouse
Host:	Rabbit
Isotype:	IgG
Clonality:	Polyclonal
Immunogen:	The antiserum was produced against synthesized peptide derived from N-terminal of human AGR3.
Formulation:	Phosphate buffered saline (without Mg ²⁺ and Ca ²⁺), pH 7.4, 150mM NaCl, 0.02% sodium azide and 50% glycerol.
Concentration:	lot specific
Purification:	The antibody was affinity-purified from rabbit antiserum by affinity-chromatography using epitope-specific immunogen.
Conjugation:	Unconjugated
Storage:	Store at -20°C as received.
Stability:	Stable for 12 months from date of receipt.
Gene Name:	anterior gradient 3, protein disulphide isomerase family member
Database Link:	NP_789783 Entrez Gene 403205 Mouse Entrez Gene 155465 Human Q8TD06
Synonyms:	AG-3; AG3; BCMP11; hAG-3; HAG3; PDIA18
Note:	AGR3 antibody detects endogenous levels of total AGR3 protein.
Protein Families:	Secreted Protein



[View online »](#)

Product images:

Immunohistochemistry analysis of paraffin-embedded human breast carcinoma tissue, using AGR3 antibody. The picture on the right is treated with the synthesized peptide.



Immunofluorescence analysis of COS-7 cells, using AGR3 antibody. The picture on the right is treated with the synthesized peptide.