

Product datasheet for **TA312496**

CCKBR Rabbit Polyclonal Antibody

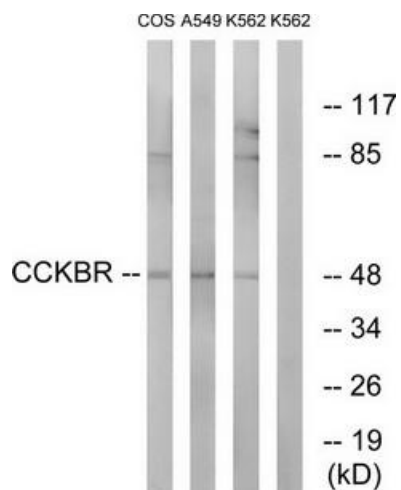
Product data:

Product Type:	Primary Antibodies
Applications:	WB
Recommended Dilution:	WB: 1:500~1:3000, ELISA: 1:20000
Reactivity:	Human, Mouse, Rat
Host:	Rabbit
Isotype:	IgG
Clonality:	Polyclonal
Immunogen:	The antiserum was produced against synthesized peptide derived from internal of human CCKBR.
Formulation:	Phosphate buffered saline (without Mg ²⁺ and Ca ²⁺), pH 7.4, 150mM NaCl, 0.02% sodium azide and 50% glycerol.
Concentration:	lot specific
Purification:	The antibody was affinity-purified from rabbit antiserum by affinity-chromatography using epitope-specific immunogen.
Conjugation:	Unconjugated
Storage:	Store at -20°C as received.
Stability:	Stable for 12 months from date of receipt.
Gene Name:	cholecystokinin B receptor
Database Link:	NP_795344 Entrez Gene 12426 MouseEntrez Gene 25706 RatEntrez Gene 887 Human P32239
Synonyms:	CCK-B; CCK2R; GASR
Note:	CCKBR antibody detects endogenous levels of total CCKBR protein.
Protein Families:	Druggable Genome, GPCR, Transmembrane
Protein Pathways:	Calcium signaling pathway, Neuroactive ligand-receptor interaction



[View online »](#)

Product images:



Western blot analysis of extracts from COS-7 cells, A549 cells and K562 cells, using CCKBR antibody. The lane on the right is treated with the synthesized peptide.