

Product datasheet for **TA312486**

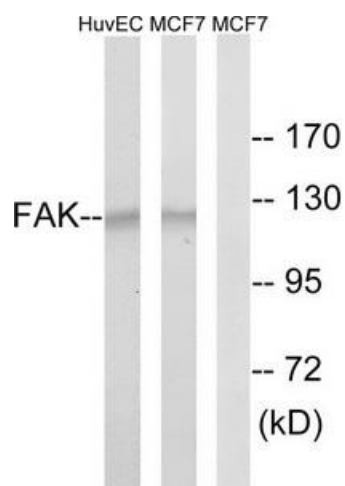
FAK (PTK2) Rabbit Polyclonal Antibody

Product data:

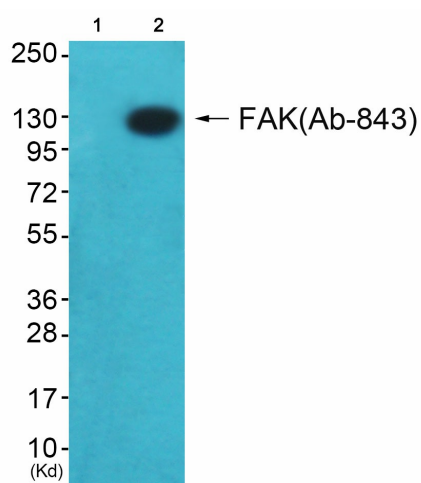
| | |
|-----------------------|--------------------------------------------------------------------------------------------------------------------------------------------------------------------------------------------------------------------------------|
| Product Type: | Primary Antibodies |
| Applications: | IHC, WB |
| Recommended Dilution: | WB: 1:500~1:3000, IHC: 1:50~1:100, ELISA: 1:40000 |
| Reactivity: | Human, Mouse, Rat |
| Host: | Rabbit |
| Isotype: | IgG |
| Clonality: | Polyclonal |
| Immunogen: | The antiserum was produced against synthesized peptide derived from Internal of human FAK. |
| Formulation: | Phosphate buffered saline (without Mg ²⁺ and Ca ²⁺), pH 7.4, 150mM NaCl, 0.02% sodium azide and 50% glycerol. |
| Concentration: | lot specific |
| Purification: | The antibody was affinity-purified from rabbit antiserum by affinity-chromatography using epitope-specific immunogen. |
| Conjugation: | Unconjugated |
| Storage: | Store at -20°C as received. |
| Stability: | Stable for 12 months from date of receipt. |
| Gene Name: | protein tyrosine kinase 2 |
| Database Link: | NP_722560 Entrez Gene 14083 Mouse Entrez Gene 25614 Rat Entrez Gene 5747 Human Q05397 |
| Synonyms: | FADK; FAK; FAK1; FRNK; p125FAK; pp125FAK; PPP1R71 |
| Note: | FAK (Ab-843) antibody detects endogenous levels of total FAK protein. |
| Protein Families: | Druggable Genome, Protein Kinase |
| Protein Pathways: | Axon guidance, Chemokine signaling pathway, ErbB signaling pathway, Focal adhesion, Leukocyte transendothelial migration, Pathways in cancer, Regulation of actin cytoskeleton, Small cell lung cancer, VEGF signaling pathway |



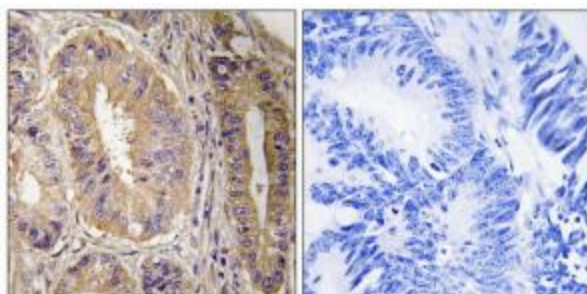
[View online »](#)

Product images:


Western blot analysis of extracts from HUVEC cells and MCF-7 cells, using FAK (Ab-843) antibody. The lane on the right is treated with the synthesized peptide.



Western blot analysis of extracts from HeLa cells (Lane 2), using FAK (Ab-843) Antibody. The lane on the left is treated with synthesized peptide.



Immunohistochemistry analysis of paraffin-embedded human colon carcinoma tissue, using FAK (Ab-843) antibody. The picture on the right is treated with the synthesized peptide.