

## Product datasheet for **TA312479**

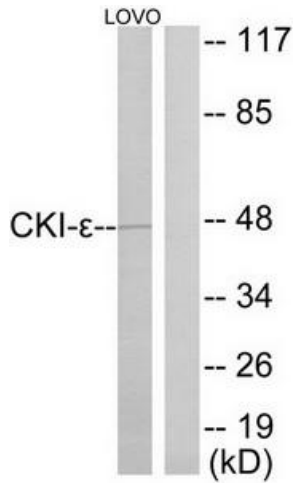
### CK1 epsilon (CSNK1E) Rabbit Polyclonal Antibody

#### Product data:

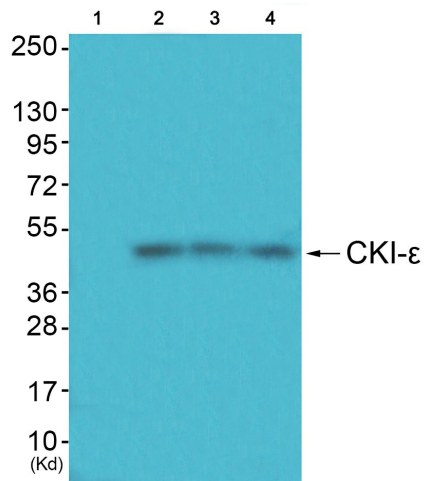
|                       |   |
|-----------------------|---|
| Product Type:         | Primary Antibodies  |
| Applications:         | IF, IHC, WB   |
| Recommended Dilution: | WB: 1:500~1:3000, IHC: 1:50~1:100, IF: 1:100~1:500, ELISA: 1:20000  |
| Reactivity:           | Human, Mouse  |
| Host:                 | Rabbit  |
| Isotype:              | IgG   |
| Clonality:            | Polyclonal  |
| Immunogen:            | The antiserum was produced against synthesized peptide derived from internal of human CKI-e.  |
| Formulation:          | Phosphate buffered saline (without Mg <sup>2+</sup> and Ca <sup>2+</sup> ), pH 7.4, 150mM NaCl, 0.02% sodium azide and 50% glycerol.  |
| Concentration:        | lot specific  |
| Purification:         | The antibody was affinity-purified from rabbit antiserum by affinity-chromatography using epitope-specific immunogen.                 |
| Conjugation:          | Unconjugated  |
| Storage:              | Store at -20°C as received.   |
| Stability:            | Stable for 12 months from date of receipt.  |
| Gene Name:            | casein kinase 1 epsilon   |
| Database Link:        | <a href="#">NP_689407</a><br><a href="#">Entrez Gene 27373 Mouse</a> <a href="#">Entrez Gene 1454 Human</a><br><a href="#">P49674</a> |
| Synonyms:             | CKIepsilon; HCKIE   |
| Note:                 | CKI-. antibody detects endogenous levels of total CKI-. protein.  |
| Protein Families:     | Druggable Genome, Protein Kinase  |
| Protein Pathways:     | Circadian rhythm - mammal, Hedgehog signaling pathway, Wnt signaling pathway  |



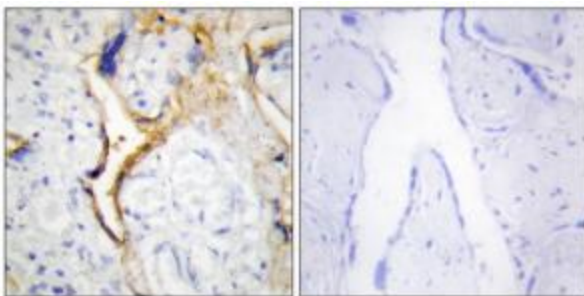
[View online »](#)

**Product images:**


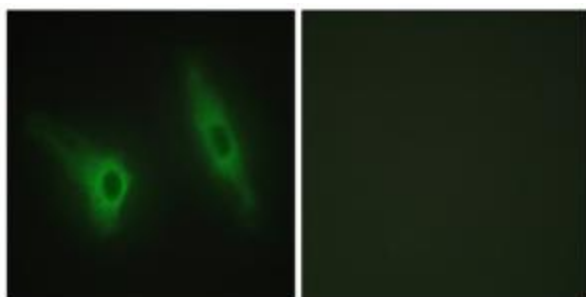
Western blot analysis of extracts from LOVO cells, using CKI-e antibody. The lane on the right is treated with the synthesized peptide.



Western blot analysis of extracts from HuvEc cells (Lane 2), JK cells (Lane 3) and cos-7 cells (Lane 4), using CKI-e Antibody. The lane on the left is treated with synthesized peptide.



Immunohistochemistry analysis of paraffin-embedded human placenta tissue using CKI-e antibody. The picture on the right is treated with the synthesized peptide.



Immunofluorescence analysis of HeLa cells, using CKI-e antibody. The picture on the right is treated with the synthesized peptide.