

Product datasheet for **TA312478**

Cell adhesion molecule 4 (CADM4) Rabbit Polyclonal Antibody

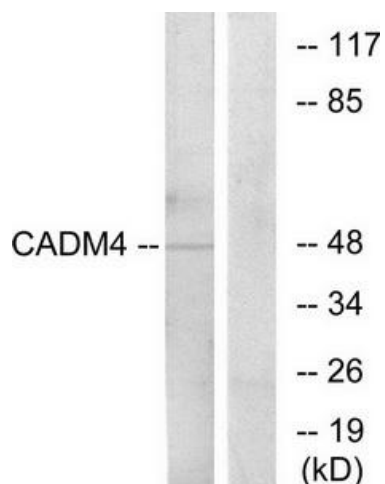
Product data:

Product Type:	Primary Antibodies
Applications:	IF, IHC, WB
Recommended Dilution:	WB: 1:500~1:3000, IF: 1:100~1:500, IHC: 1:50~1:100, ELISA: 1:20000
Reactivity:	Human, Mouse, Rat
Host:	Rabbit
Isotype:	IgG
Clonality:	Polyclonal
Immunogen:	The antiserum was produced against synthesized peptide derived from internal of human CADM4.
Formulation:	Phosphate buffered saline (without Mg ²⁺ and Ca ²⁺), pH 7.4, 150mM NaCl, 0.02% sodium azide and 50% glycerol.
Concentration:	lot specific
Purification:	The antibody was affinity-purified from rabbit antiserum by affinity-chromatography using epitope-specific immunogen.
Conjugation:	Unconjugated
Storage:	Store at -20°C as received.
Stability:	Stable for 12 months from date of receipt.
Gene Name:	cell adhesion molecule 4
Database Link:	NP_660339 Entrez Gene 260299 MouseEntrez Gene 365216 RatEntrez Gene 199731 Human Q8NFZ8
Synonyms:	IGSF4C; Necl-4; NECL4; synCAM4; TSLL2
Note:	CADM4 antibody detects endogenous levels of total CADM4 protein.
Protein Families:	Transmembrane

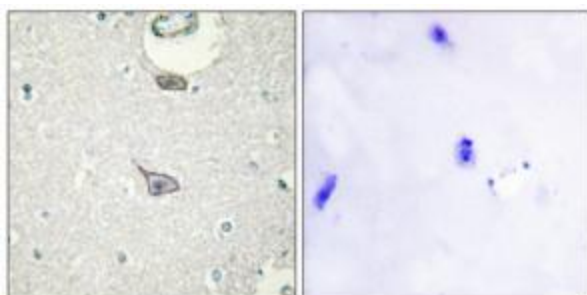


[View online »](#)

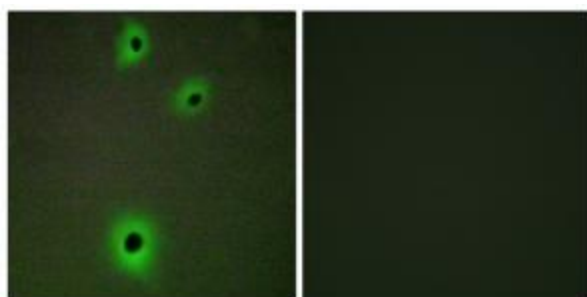
Product images:



Western blot analysis of extracts from RAW264.7 cells, using CADM4 antibody. The lane on the right is treated with the synthesized peptide.



Immunohistochemistry analysis of paraffin-embedded human brain tissue using CADM4 antibody. The picture on the right is treated with the synthesized peptide.



Immunofluorescence analysis of A549 cells, using CADM4 antibody. The picture on the right is treated with the synthesized peptide.