

Product datasheet for **TA312472**

Bcl x (BCL2L1) Rabbit Polyclonal Antibody

Product data:

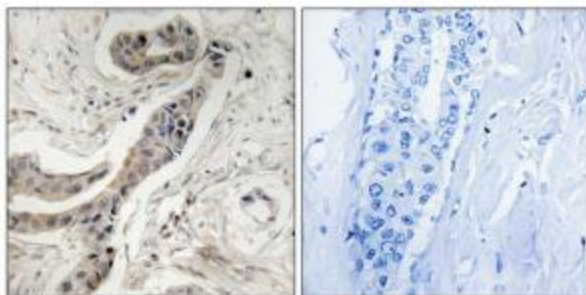
Product Type:	Primary Antibodies
Applications:	IHC
Recommended Dilution:	IHC: 1:50~1:100, ELISA: 1:1000
Reactivity:	Human, Mouse, Rat
Modifications:	Phospho-specific
Host:	Rabbit
Isotype:	IgG
Clonality:	Polyclonal
Immunogen:	The antiserum was produced against synthesized phosphopeptide derived from human BCL-XL around the phosphorylation site of threonine 115 (H-I-TP-P-G).
Formulation:	Phosphate buffered saline (without Mg ²⁺ and Ca ²⁺), pH 7.4, 150mM NaCl, 0.02% sodium azide and 50% glycerol.
Concentration:	lot specific
Purification:	The antibody was affinity-purified from rabbit antiserum by affinity-chromatography using epitope-specific immunogen.
Conjugation:	Unconjugated
Storage:	Store at -20°C as received.
Stability:	Stable for 12 months from date of receipt.
Gene Name:	BCL2 like 1
Database Link:	NP_001182 Entrez Gene 12048 Mouse Entrez Gene 24888 Rat Entrez Gene 598 Human Q07817
Synonyms:	Bcl-X; BCL-XL; BCL2L; BCLX; PPP1R52; S
Note:	BCL-XL (Phospho-Thr115) antibody detects endogenous levels of BCL-XL only when phosphorylated at threonine 115.
Protein Families:	Druggable Genome, ES Cell Differentiation/IPS, Transmembrane



[View online »](#)

Protein Pathways: Amyotrophic lateral sclerosis (ALS), Apoptosis, Chronic myeloid leukemia, Jak-STAT signaling pathway, Pancreatic cancer, Pathways in cancer, Small cell lung cancer

Product images:



Immunohistochemistry analysis of paraffin-embedded human breast carcinoma tissue using BCL-XL (Phospho-Thr115) antibody. The picture on the right is treated with the synthesized peptide.