

Product datasheet for **TA312470**

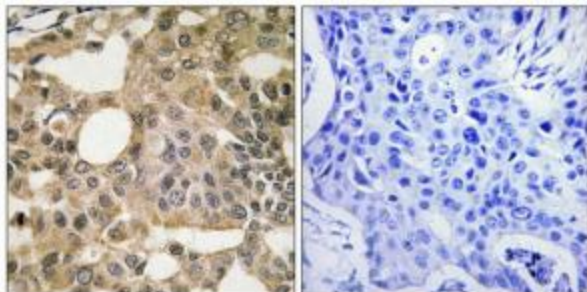
Bcl x (BCL2L1) Rabbit Polyclonal Antibody

Product data:

| | |
|------------------------------|--|
| Product Type: | Primary Antibodies |
| Applications: | IHC |
| Recommended Dilution: | IHC: 1:50~1:100, ELISA: 1:5000 |
| Reactivity: | Human, Mouse, Rat |
| Host: | Rabbit |
| Isotype: | IgG |
| Clonality: | Polyclonal |
| Immunogen: | The antiserum was produced against synthesized peptide derived from Internal of human BCL-XL. |
| Formulation: | Phosphate buffered saline (without Mg ²⁺ and Ca ²⁺), pH 7.4, 150mM NaCl, 0.02% sodium azide and 50% glycerol. |
| Concentration: | lot specific |
| Purification: | The antibody was affinity-purified from rabbit antiserum by affinity-chromatography using epitope-specific immunogen. |
| Conjugation: | Unconjugated |
| Storage: | Store at -20°C as received. |
| Stability: | Stable for 12 months from date of receipt. |
| Gene Name: | BCL2 like 1 |
| Database Link: | NP_001182 Entrez Gene 12048 Mouse Entrez Gene 24888 Rat Entrez Gene 598 Human Q07817 |
| Synonyms: | Bcl-X; BCL-XL; BCL2L; BCLX; PPP1R52; S |
| Note: | BCL-XL antibody detects endogenous levels of total BCL-XL protein. |
| Protein Families: | Druggable Genome, ES Cell Differentiation/IPS, Transmembrane |
| Protein Pathways: | Amyotrophic lateral sclerosis (ALS), Apoptosis, Chronic myeloid leukemia, Jak-STAT signaling pathway, Pancreatic cancer, Pathways in cancer, Small cell lung cancer |



[View online »](#)

Product images:

Immunohistochemistry analysis of paraffin-embedded human breast carcinoma tissue using BCL-XL antibody. The picture on the right is treated with the synthesized peptide.