

Product datasheet for **TA312466**

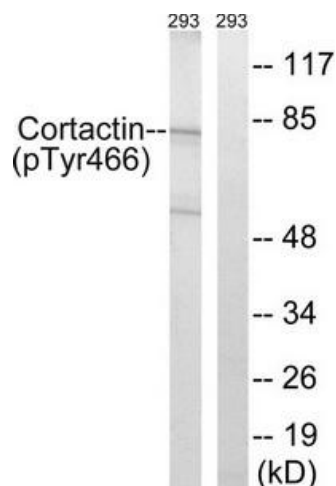
Cortactin (CTTN) Rabbit Polyclonal Antibody

Product data:

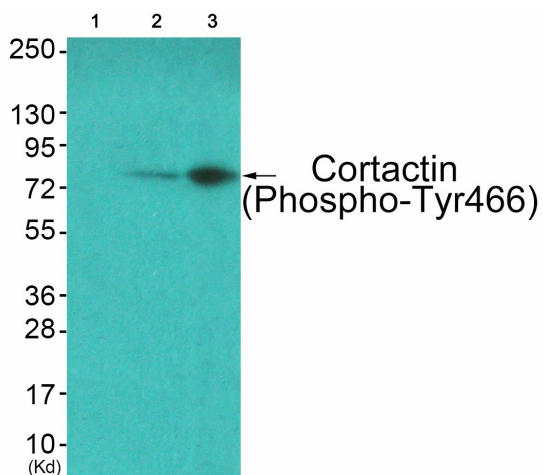
Product Type:	Primary Antibodies
Applications:	IHC, WB
Recommended Dilution:	WB: 1:500~1:3000, IHC:1:50~1:100, ELISA: 1:20000
Reactivity:	Human, Mouse, Rat
Modifications:	Phospho-specific
Host:	Rabbit
Isotype:	IgG
Clonality:	Polyclonal
Immunogen:	The antiserum was produced against synthesized phosphopeptide derived from human Cortactin around the phosphorylation site of tyrosine 466 (P-V-YP-E-T).
Formulation:	Phosphate buffered saline (without Mg ²⁺ and Ca ²⁺), pH 7.4, 150mM NaCl, 0.02% sodium azide and 50% glycerol.
Concentration:	lot specific
Purification:	The antibody was affinity-purified from rabbit antiserum by affinity-chromatography using epitope-specific immunogen.
Conjugation:	Unconjugated
Storage:	Store at -20°C as received.
Stability:	Stable for 12 months from date of receipt.
Gene Name:	cortactin
Database Link:	NP_612632 Entrez Gene 13043 Mouse Entrez Gene 60465 Rat Entrez Gene 2017 Human Q14247
Synonyms:	EMS1
Note:	Cortactin (phospho-Tyr466) antibody detects endogenous levels of Cortactin only when phosphorylated at tyrosine 466.
Protein Families:	Druggable Genome
Protein Pathways:	Pathogenic Escherichia coli infection, Tight junction



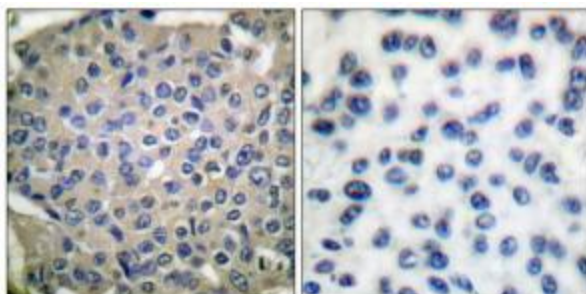
[View online »](#)

Product images:


Western blot analysis of extracts from 293 cells using Cortactin (phospho-Tyr466) antibody. The lane on the right is treated with the synthesized peptide.



Western blot analysis of extracts from COS7 cells (Lane 2) and JK cells (Lane 3), using Cortactin (Phospho-Tyr466) Antibody. The lane on the left is treated with synthesized peptide.



Immunohistochemical analysis of paraffin-embedded human breast carcinoma tissue, using Cortactin (phospho-Tyr466) antibody. The picture on the right is treated with the synthesized peptide.